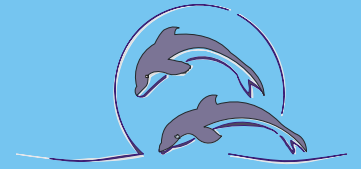




**Environmental Management in the Coastal Zone ~
Cambodia**

Ministry of Environment and DANIDA



State of the Coastal Environment and Socio-economy September 2005 Report

Population Tables

Table 43: Population Table I by Coastal Zone, Provinces and Municipalities, Districts and Communes. Total Population (2003), Population Density (2003), Population Growth (1998-2003), Dependency Ratio (2003), Child Dependency Ratio (2003), Female Headed Households (2003) and Birth Rate (2003).

តារាងទី ៤៣: ចំនួនប្រជាជនតាមតំបន់ឆ្នេរ ខេត្ត ក្រុង ស្រុក និងឃុំភូមិតំបន់ឆ្នេរ ។ ចំនួនប្រជាជនសរុប (២០០៣), ដង់ស៊ីតេប្រជាជន (២០០៣), កំណើនប្រជាជន (១៩៩៨-២០០៣), អត្រាមនុស្សក្នុងបន្ទុក (២០០៣), អត្រាក្មេងក្នុងបន្ទុក (២០០៣), ចំនួនគ្រួសារដែលមានស្ត្រីជាមេគ្រួសារ (២០០៣) និងអត្រាកំណើតទារក (២០០៣)

Area	Total Population	Population Density	Population Growth	Family Size	Dependency Ratio	Child Dependency Ratio	Female Headed Households	Birth Rate
	Persons	Persons per km ²	Annual % 1998-2003	Persons per family	<15 and >64 per 100 15-64	<15 per 100 15,64	%	# per 1000 2002,2003
COASTAL ZONE	889,965	48	1.04	5.10	69.4	61.6	18.8	12.4
PROVINCE: Kampot	565,381	120	1.35	5.06	70.2	61.6	19.8	13.8
District: Angkor Chev	77,505	245	1.35	4.97	65.0	55.6	18.2	13.8
Angk Phnum Touch	4,825	280	3.48	5.04	65.9	57.3	16.6	16.4
Angkor Chev	4,093	274	0.10	4.84	63.4	55.3	15.7	7.8
Champey	9,497	297	2.39	5.44	73.1	67.4	20.1	11.7
Dambouk Khpos	14,959	243	1.42	4.74	66.2	56.3	17.0	14.9
Dan Koum	5,461	182	0.24	4.79	61.0	51.4	16.1	18.9
Daeum Doung	2,898	165	2.37	4.42	55.2	49.9	20.2	16.9
Mroum	4,536	255	1.34	4.87	66.7	54.5	21.9	18.5
Phnum Kong	10,162	295	0.47	5.15	71.5	59.3	12.0	15.2
Praphnum	5,158	197	1.07	4.92	58.6	47.7	21.8	13.2
Samlanh	6,949	277	2.79	5.36	58.4	47.7	25.8	9.5
Tani	8,967	225	0.16	4.90	62.3	53.9	18.0	11.0
District: Banteay Meas	85,628	213	0.98	4.82	63.1	54.5	14.9	13.3
Banteay Meas Khang Kaeut	7,172	202	-1.50	4.19	72.6	58.9	11.4	13.0
Banteay Meas Khang Lech	7,079	210	0.26	4.27	58.6	48.6	14.3	14.3
Prey Tonle	2,391	63	1.30	4.86	77.6	73.7	14.6	25.5
Samraong Kraom	6,095	270	1.60	4.86	59.1	50.6	18.2	11.6
Samraong Leu	5,518	331	0.93	5.03	67.3	54.0	17.2	8.3
Sdach Kong Khang Cheung	5,312	239	0.22	4.40	51.9	48.7	11.3	17.3
Sdach Kong Khang Lech	4,618	189	1.75	5.61	69.1	60.4	21.0	10.2
Sdach Kong Khang Tboung	2,842	107	1.36	5.14	74.7	68.6	12.8	14.1
Tnaot Chong Srang	7,533	157	0.44	4.66	69.4	64.2	9.9	13.7
Trapeang Sala Khang Kaeut	4,115	190	0.89	4.70	60.4	49.7	16.6	15.8
Trapeang Sala Khang Lech	5,406	327	1.75	4.77	56.1	49.7	18.5	10.4
Tuk Meas Khang Kaeut	5,730	206	3.41	5.64	65.2	50.9	11.0	12.4
Tuk Meas Khang Lech	9,133	263	0.05	4.85	56.7	51.1	17.9	10.3
Voat Angk Khang Cheung	6,594	516	1.51	5.11	69.3	58.2	17.8	16.7
Voat Angk Khang Tboung	6,090	304	3.04	5.30	56.3	50.7	13.4	14.3
District: Chhuk	88,620	69	2.31	4.90	72.0	66.3	30.8	12.7
Baniev	5,601	268	0.81	4.97	73.8	68.2	57.0	17.3
Takaen	8,179	22	17.05	4.72	86.1	83.2	79.9	20.2
Boeng Nimol	5,463	172	-0.90	4.64	75.5	68.3	65.5	10.8
Chhuk	7,494	232	0.12	4.88	66.5	61.2	28.6	15.2
Doun Yay	5,478	574	-0.75	4.90	67.6	62.2	15.6	10.6
Krang Sbov	5,766	297	0.75	4.99	72.3	63.9	16.5	16.6
Krang Snay	10,156	415	-0.17	4.96	65.4	60.5	17.1	8.0
Lbaeuk	7,176	68	2.38	5.34	83.2	74.8	11.4	11.7
Trapeang Plang	4,875	8	21.58	4.39	85.8	82.3	11.0	22.2
Mean Chey	4,441	299	0.68	4.91	60.3	51.9	25.0	13.5
Neareay	5,578	304	1.87	5.06	84.3	75.6	17.6	8.1
Satv Pong	6,693	390	0.27	4.73	72.5	67.5	41.8	8.2
Trapeang Bei	5,070	395	0.10	4.95	48.9	46.9	13.9	6.3
Tramaeng	6,650	394	0.80	5.23	69.5	64.6	13.8	10.2
District: Chum Kiri	41,736	93	1.19	4.85	83.2	76.8	16.2	14.1
Chres	5,372	227	-0.73	4.54	79.0	71.8	12.9	10.4
Chumpu Voan	7,269	128	1.62	4.84	82.3	76.1	19.7	17.5
Snay Anhchet	5,055	86	2.30	4.68	84.1	80.5	17.3	17.0
Srae Chaeng	8,081	46	1.44	5.02	94.8	91.3	9.6	13.9
Srae Knong	5,441	86	1.33	5.08	58.8	52.2	17.8	18.2
Srae Samraong	4,126	105	1.28	4.80	80.3	68.1	21.9	13.3
Trapeang Reang	6,392	222	1.07	4.94	100.5	92.7	17.3	8.3
District: Dang Tong	52,041	165	0.73	4.89	68.3	59.3	25.1	17.3
Damnak Sokram	3,712	122	0.52	5.03	50.2	43.6	17.2	29.1
Dang Tong	10,191	238	1.13	4.91	65.2	59.1	21.7	16.5
Khcheay Khang Cheung	4,768	250	0.63	5.23	69.5	63.3	40.0	10.7
Khcheay Khang Tboung	5,013	282	0.62	4.79	69.9	63.4	15.7	13.0
Mean Ritth	4,610	116	0.31	4.83	70.6	65.7	47.7	12.4
Srae Chea Khang Cheung	3,431	141	3.70	5.27	83.2	71.6	16.6	20.4
Srae Chea Khang Tboung	2,430	64	4.36	4.66	55.0	51.6	15.2	6.2
Totung	6,419	230	-0.11	4.38	56.7	50.1	16.0	18.4
Angkor Meas	6,032	324	0.41	4.99	69.9	65.8	15.5	22.9
L'ang	5,435	97	-1.04	5.12	99.2	60.3	46.7	20.4

Area	Total Population	Population Density	Population Growth	Family Size	Dependency Ratio	Child Dependency Ratio	Female Headed Households	Birth Rate
	Persons	Persons per km ²	Annual % 1998-2003	Persons per family	<15 and >64 per 100 15-64	<15 per 100 15,64	%	# per 1000 2002,2003
District: Kampong Trach	88,452	251	1.26	5.39	71.8	60.9	15.1	10.8
Boeng Sala Khang Cheung	7,630	308	2.63	5.81	70.0	59.0	18.2	14.3
Boeng Sala Khang Tboung	7,814	159	1.31	5.30	65.9	60.2	9.6	10.2
Damnak Kantuot Khang Cheung	5,857	281	-0.07	5.44	73.5	62.1	14.4	11.8
Damnak Kantuot Khang Tboung	7,498	283	1.04	5.30	72.5	66.0	14.8	13.1
Kampong Trach Khang Kaeut	9,958	628	1.55	5.51	58.1	50.6	16.7	9.4
Kampong Trach Khang Lech	5,660	104	0.43	5.23	85.1	65.0	21.8	14.8
Kanthaor Khang Cheung	2,680	282	0.69	5.68	83.9	66.4	19.5	4.5
Kanthaor Khang kaeut	4,490	236	0.39	4.54	72.8	66.5	13.2	8.7
Kanthaor Khang Lech	4,742	291	0.37	5.44	67.0	60.4	21.4	7.4
Preaek Kroes	9,705	290	2.20	5.05	79.5	71.5	14.5	8.6
Ruessei srok Khang Kaeut	4,705	205	2.67	5.88	81.5	73.5	13.5	12.8
Ruessei Srok Khang Lech	9,530	331	0.25	5.59	78.5	54.2	11.2	8.2
Svay Tong Khang Cheung	3,452	196	1.83	5.38	52.9	45.7	9.5	15.6
Svay Tong Khang Tboung	4,731	342	2.01	5.54	73.0	59.1	16.7	13.1
District: Kampot	97,144	64	1.58	5.31	75.1	65.2	19.2	14.7
Boeng Tuk	4,579	109	1.39	5.29	58.5	53.1	24.7	14.2
Chum Kriel	4,900	240	-2.42	4.96	53.3	39.2	70.2	14.3
Kampong Kraeng	6,576	400	1.37	5.39	61.4	52.3	22.6	11.3
Kampong Samraong	2,646	388	-1.02	5.17	65.6	60.1	15.6	15.1
Kandal	10,968	136	6.19	5.74	96.1	88.0	9.2	17.7
Kaoh Touch	5,262	67	1.07	5.69	76.8	66.8	12.1	18.2
Koun Satv	7,832	129	2.75	5.49	82.2	73.3	22.9	19.0
Meakprang	4,929	101	0.08	5.53	62.4	47.2	6.7	7.7
Preaek Tnaot	7,614	108	-0.58	5.29	82.5	78.4	9.5	10.8
Prey Khmum	6,380	275	1.27	5.09	75.3	69.0	18.3	11.0
Prey Thnang	9,779	126	2.51	4.73	79.8	67.5	7.5	9.9
Stueng Kaev	4,461	44	0.92	4.98	107.9	79.2	19.0	18.2
Thmei	7,446	110	2.86	5.36	64.0	58.2	15.1	25.8
Trapeang Pring	5,975	137	1.18	5.67	75.7	60.9	29.5	20.3
Trapeang sangkae	5,145	388	0.51	5.37	81.2	71.3	24.5	6.0
Trapeang Thum	2,652	870	1.48	5.12	62.8	56.4	23.9	10.6
District: Kampong Bav	34,255	637	0.67	5.37	66.7	59.8	16.8	17.7
Kampong Kandal	8,055	4025	-0.22	5.35	57.8	52.6	15.7	33.0
Krang Ampil	4,713	1902	2.52	5.74	94.0	75.4	23.0	19.9
Kampong Bay	6,365	3511	-0.76	5.50	48.6	41.8	5.7	5.7
Andoung Khmaer	9,738	372	1.30	5.25	70.0	65.7	22.9	13.1
Traeuy Kaoh	5,384	253	1.15	5.17	79.0	73.9	15.2	15.2
PROVINCE: Koh Kong	126,595	10	-0.85	5.09	71.6	65.7	19.6	11.9
District: Botum Sakor	18,032	17	0.69	5.14	80.7	76.7	20.5	15.1
Andoung Tuek	5,005	12	-3.89	4.94	79.5	74.9	13.4	14.2
Kandaol	2,246	14	2.99	4.88	81.1	74.5	14.6	11.6
Ta Nun	1,183	4	3.02	4.83	81.2	75.5	43.3	27.0
Thma Sa	9,598	40	2.69	5.35	81.3	78.3	22.8	15.0
District: Kiri Sakor	5,923	9	-1.20	4.78	46.7	44.5	12.3	12.8
Kaoh Sdach	3,794	21	-4.32	4.82	35.2	33.6	10.8	9.5
Phnhi Meas	639	3	5.52	4.47	53.6	49.5	9.8	21.9
Preaek Khsach	1,490	5	6.14	4.84	82.6	79.3	17.2	17.4
District: Kaoh Kong	6,694	4	-5.51	4.70	77.5	73.8	34.4	43.0
Chrouy Pras	1,743	4	-0.01	5.17	79.5	78.0	6.8	25.8
Kaoh Kapi	2,421	41	-4.37	4.96	78.7	77.2	55.9	60.7
Ta Tai Kraom	936	5	-0.49	4.52	88.3	82.1	33.8	67.3
Trapeang Rung	1,594	2	-13.32	4.07	68.0	60.2	31.6	20.7
District: Smach Mean Chey	29,022	289	-0.21	5.53	63.4	59.2	15.8	5.4
Smach Mean Chey	13,616	237	3.70	6.53	48.8	46.4	12.6	8.5
Dang Tong	12,975	6454	-3.57	4.81	80.5	74.0	19.6	0.0
Stueng Veang	2,431	59	-0.56	5.23	70.7	66.2	8.4	16.5
District: Mondol Seima	12,659	9	0.14	4.85	50.7	46.4	13.3	9.2
Bak Khlang	11,198	8	1.72	4.86	49.6	45.2	14.2	8.0
Peam Krasaob	591	13	-15.72	4.97	68.4	66.1	3.4	11.8
Tuol Kokir	870	12	-2.71	4.75	54.0	49.6	9.3	21.8
District: Srae Ambel	35,188	15	-1.77	5.22	86.6	75.7	25.0	7.1
Boeng Preav	6,486	65	2.42	4.79	76.4	69.6	27.2	9.3
Chi Kha Kraom	2,878	40	3.93	5.55	100.1	86.6	36.8	16.0
Chi Kha Leu	3,020	5	2.54	5.13	90.4	81.5	17.1	18.9
Chrouy Svay	5,742	20	5.28	4.83	83.8	66.5	27.0	11.7
Dang Peang	4,265	3	-13.26	5.10	91.9	86.2	20.1	4.7
Srae Ambel	12,797	227	-3.15	5.67	87.9	76.3	23.7	0.0
District: Thma Bang	4,987	1	3.05	4.17	74.6	64.9	17.3	22.3
Ta Tey Leu	374	0	4.08	4.16	103.3	91.3	8.9	50.8
Pralay	547	1	-12.72	4.02	85.4	47.1	19.9	21.9
Chumnoab	218	0	-12.44	4.84	83.2	76.5	4.4	27.5
Ruessei Chrum	701	1	21.86	4.52	64.6	61.5	10.3	25.7
Chi Phat	2,880	27	14.40	4.12	71.3	65.4	20.7	14.2
Thmor Donpove	267	4	-24.33	3.81	75.7	62.5	12.9	56.2
District: Kampong Seila	14,090	14	-1.20	4.87	73.7	70.1	15.3	17.2

Area	Total Population	Population Density	Population Growth	Family Size	Dependency Ratio	Child Dependency Ratio	Female Headed Households	Birth Rate
	Persons	Persons per km ²	Annual % 1998-2003	Persons per family	<15 and >64 per 100 15-64	<15 per 100 15,64	%	# per 1000 2002,2003
Chamkar Luong	2,516	23	6.14	4.86	92.4	87.1	30.1	19.1
Kampong Seila	6,126	19	-1.07	4.90	76.9	72.8	15.4	18.6
Ou Bak Roteh	3,382	7	-1.41	5.18	64.5	61.5	8.9	14.2
Stueng Chhay	2,066	24	-7.60	4.34	60.5	58.9	8.0	15.5
MUNICIPALITY: Sihanoukville	164,364	110	1.08	5.27	64.4	57.6	13.7	7.7
District: Mittakpheap	70,448	373	0.87	5.18	53.4	47.7	11.8	1.0
Sangkat Muoy	15,381	338	1.70	4.76	59.4	57.5	13.1	0.0
Sangkat Pir	11,528	4879	-0.36	5.07	40.3	36.9	27.5	0.0
Sangkat Bei	17,436	1315	0.33	5.01	64.5	59.9	4.8	0.0
Sangkat Buon	23,925	975	0.19	5.64	47.7	37.9	7.4	0.0
Kaoh Rung	2,178	21	22.22	5.78	73.1	67.6	21.5	32.1
District: Prey Nob	81,195	69	1.55	5.36	76.3	68.1	15.6	12.2
Andoung Thma	5,023	103	1.86	5.53	76.5	66.7	14.6	13.1
Boeng Ta Prum	6,946	215	2.36	5.63	91.6	85.7	8.5	15.0
Bet Trang	3,103	41	1.88	4.83	98.7	82.6	13.1	6.4
Cheung Kou	9,750	44	3.49	5.19	69.3	64.7	20.7	12.3
Ou Chrov	5,608	365	1.04	5.24	91.7	80.3	26.0	8.7
Ou Oknha Heng	6,650	96	0.57	5.49	79.5	71.2	13.1	16.2
Prey Nob	6,395	175	1.96	5.93	56.1	50.1	8.6	7.3
Ream	8,919	43	2.35	5.60	76.3	69.7	14.2	8.1
Sameakki	3,222	15	6.21	4.94	79.4	70.7	8.9	11.5
Samrong	5,909	83	1.04	5.73	76.5	69.6	15.4	21.8
Tuek L'ak	3,700	109	2.82	5.06	108.0	90.3	8.9	15.7
Tuek Thla	4,423	62	1.54	5.23	76.5	71.5	37.0	14.0
Tuol Toetung	3,518	68	1.70	5.09	78.7	63.5	17.9	16.8
Veal Renh	8,029	507	-3.05	5.10	58.3	49.3	11.0	7.2
District: Stueng Hav	12,721	95	-0.60	5.18	59.2	54.3	12.4	16.4
Kampenh	1,614	260	-1.07	5.01	65.4	61.2	14.9	26.6
Ou Treh	3,383	44	-1.34	4.98	55.6	52.7	9.4	10.3
Tumnob Rolok	7,724	151	-0.17	5.30	59.6	53.6	13.3	17.0
MUNICIPALITY: Kep	33,625	191	3.20	4.97	74.2	67.7	21.7	14.3
District: Damnak Chang'aeur	22,431	197	4.03	5.06	72.9	66.6	23.6	14.6
Angkaol	7,353	122	3.08	5.37	74.3	68.8	8.0	13.9
Ou Krasar	6,354	413	2.03	4.83	76.3	68.6	39.8	22.7
Pong Tuek	8,724	230	6.52	5.00	69.4	63.4	23.6	9.4
District: Kaeb	11,194	181	1.63	4.79	76.8	69.8	18.2	13.6
Kaeb	4,210	203	0.94	4.90	77.2	70.4	10.3	5.7
Prey Thum	6,984	170	2.06	4.73	76.5	69.5	22.7	18.3

Sources: Calculations based on Commune Database 2003 and National Census 1998 (population growth only)

Table 44: Population Table II by Coastal Zone, Provinces and Municipalities, Districts and Communes. Child Population (2003), Adult Population (2003), Elderly Population (2003), Overall Gender Ratio (2003), Child Gender Ratio (2003), Adult Gender Ratio (2003) and Elderly Gender Ratio (2003).

តារាងទី ៤៤: ចំនួនប្រជាជនតាមតំបន់ឆ្នេរ ខេត្ត ក្រុង ស្រុក និងឃុំភូមិតំបន់ឆ្នេរ ។ ចំនួនកុមារ (២០០៣), ចំនួនមជ្ឈមណ្ឌល (២០០៣), ចំនួនមនុស្សចាស់ (១៩៤៩-២០០៣), អត្រាយេនឌ័រសរុប (២០០៣), អត្រាយេនឌ័រកុមារ (២០០៣), អត្រាយេនឌ័រមជ្ឈមណ្ឌល (២០០៣) និងអត្រាយេនឌ័រមនុស្សចាស់ (២០០៣)

Area	Population < 15 %	Population < 18 %	Population 15,64 %	Population >64 %	Sex Ratio All males per 100 females	Sex Ratio < 15 males per 100 females	Sex Ratio 15,64 males per 100 females	Sex Ratio >64 males per 100 females
COASTAL ZONE	36.4	47.0	59.0	4.6	94.8	99.5	93.3	79.6
PROVINCE: Kampot	36.2	46.4	58.8	5.1	93.1	98.7	91.4	75.8
District: Angkor Chey	33.7	43.7	60.6	5.7	92.8	101.6	90.4	71.3
Angk Phnum Touch	34.5	43.8	60.3	5.2	96.0	108.9	94.6	47.1
Angkor Chey	33.9	44.5	61.2	4.9	101.7	93.3	109.3	75.7
Champey	38.9	48.9	57.8	3.3	99.9	108.2	96.0	77.5
Dambouk Khpos	33.8	45.0	60.2	6.0	90.1	105.0	83.7	80.1
Dan Koum	31.9	39.8	62.1	6.0	92.8	103.7	88.8	81.6
Daeum Doung	32.1	40.7	64.4	3.5	87.6	88.5	90.1	44.9
Mroum	32.7	42.6	60.0	7.3	90.1	98.1	89.4	65.5
Phnum Kong	34.6	46.1	58.3	7.1	87.8	95.7	85.2	73.6
Praphnum	30.1	37.8	63.0	6.9	87.8	92.8	86.3	80.6
Samlanh	30.1	41.9	63.1	6.7	93.3	97.0	94.3	70.5
Tani	33.2	41.8	61.6	5.2	95.7	108.5	92.9	59.7
District: Banteay Meas	33.4	43.4	61.3	5.2	93.0	101.4	90.3	76.1
Banteay Meas Khang Kaeut	34.1	42.5	57.9	7.9	89.8	103.2	81.7	98.6
Banteay Meas Khang Lech	30.7	37.8	63.0	6.3	88.2	94.1	88.2	64.0
Prey Tonle	41.5	51.6	56.3	2.2	99.1	94.9	104.9	51.4
Samraong Kraom	31.8	44.2	62.8	5.4	87.7	92.7	86.9	69.1
Samraong Leu	32.3	44.5	59.8	8.0	92.2	89.6	93.8	90.9
Sdach Kong Khang Cheung	32.0	41.0	65.8	2.1	97.3	103.6	95.9	60.6
Sdach Kong Khang Lech	35.7	45.8	59.1	5.1	88.4	97.4	88.7	41.1
Sdach Kong Khang Tbound	39.3	48.7	57.2	3.5	99.6	115.9	93.0	54.7
Tnaot Chong Srang	37.9	49.0	59.0	3.0	93.5	99.6	91.0	70.9
Trapeang Sala Khang Kaeut	31.0	42.8	62.3	6.7	91.0	117.7	80.8	82.7
Trapeang Sala Khang Lech	31.9	39.1	64.1	4.1	90.4	105.2	86.0	60.1
Tuk Meas Khang Kaeut	30.8	40.7	60.5	8.7	103.3	128.0	94.9	87.9
Tuk Meas Khang Lech	32.6	45.3	63.8	3.6	96.3	98.3	96.4	79.1
Voat Angk Khang Cheung	34.4	43.8	59.1	6.6	89.6	97.0	87.5	73.6
Voat Angk Khang Tbound	32.4	40.0	64.0	3.6	96.3	103.3	92.6	103.7
District: Chhuk	38.6	49.1	58.1	3.3	95.4	101.4	93.0	73.4
Baniev	39.3	48.3	57.5	3.2	92.9	103.0	88.4	62.7
Takaen	44.7	52.5	53.7	1.6	101.5	109.3	95.6	92.5
Boeng Nimol	38.9	48.0	57.0	4.1	91.6	92.1	95.4	48.3
Chhuk	36.7	46.0	60.0	3.2	99.8	102.7	99.7	72.1
Doun Yay	37.1	47.6	59.7	3.2	95.9	100.4	94.1	80.6
Krang Sbov	37.1	46.4	58.0	4.9	96.1	113.7	87.1	84.9
Krang Snay	36.6	47.4	60.5	3.0	95.0	93.7	98.4	52.8
Lbaeuk	40.8	50.3	54.6	4.6	100.0	96.4	105.3	74.6
Trapeang Plang	44.3	53.8	53.8	1.9	107.3	100.7	113.7	91.7
Mean Chey	32.4	47.5	62.4	5.3	89.6	107.1	82.4	81.4
Neareay	41.0	51.1	54.2	4.8	97.6	101.7	94.6	97.8
Satv Pong	39.1	47.9	58.0	2.9	90.8	102.5	85.0	66.1
Trapeang Bei	31.5	49.0	67.2	1.3	95.5	111.1	89.2	86.1
Tramaeng	38.1	51.7	59.0	2.9	83.2	94.9	76.7	77.6
District: Chum Kiri	41.9	51.4	54.6	3.5	93.1	97.0	91.3	76.6
Chres	40.1	52.5	55.9	4.0	100.7	101.5	102.9	68.0
Chumpu Voan	41.8	50.1	54.9	3.4	96.1	93.1	100.8	65.5
Snay Anhchet	43.7	51.5	54.3	2.0	89.9	104.1	81.4	52.3
Srae Chaeng	46.9	55.6	51.3	1.8	93.2	99.3	88.5	79.7
Srae Knong	32.9	45.3	63.0	4.2	87.3	95.4	85.4	59.9
Srae Samraong	37.7	48.6	55.5	6.8	91.3	97.6	88.2	83.7
Trapeang Reang	46.2	53.8	49.9	3.9	92.3	91.0	91.4	125.5
District: Dang Tong	35.2	46.3	59.4	5.3	92.6	97.0	90.8	84.7
Damnak Sokram	29.0	45.7	66.6	4.4	84.9	80.9	88.0	67.0
Dang Tong	35.8	43.9	60.5	3.7	89.2	94.5	87.9	63.6
Khcheay Khang Cheung	37.4	46.2	59.0	3.6	91.6	101.0	87.8	67.3
Khcheay Khang Tbound	37.3	45.1	58.9	3.8	108.7	119.1	104.6	80.2
Mean Ritth	38.5	51.4	58.6	2.8	86.1	97.0	79.1	97.0
Srae Chea Khang Cheung	39.1	46.4	54.6	6.3	94.2	99.6	89.0	108.7
Srae Chea Khang Tbound	33.3	40.4	64.5	2.2	81.5	84.3	80.9	60.6
Totung	32.0	40.0	63.8	4.2	90.7	93.4	90.8	71.3
Angkor Meas	38.7	53.7	58.9	2.4	100.4	95.7	103.2	110.1
L'ang	30.3	49.8	50.2	19.5	95.7	98.6	93.5	97.0
District: Kampong Trach	35.4	45.7	58.2	6.3	94.6	101.0	93.2	74.6

Area	Population < 15	Population < 18	Population 15,64	Population >64	Sex Ratio All	Sex Ratio < 15	Sex Ratio 15,64	Sex Ratio >64
	%	%	%	%	males per 100 females	males per 100 females	males per 100 females	males per 100 females
Boeng Sala Khang Cheung	34.7	47.6	58.8	6.5	101.2	95.6	105.2	96.4
Boeng Sala Khang Tbound	36.3	48.3	60.3	3.4	91.3	93.4	89.8	97.0
Damnak Kantuot Khang Cheung	35.8	44.0	57.6	6.6	102.0	106.6	100.7	89.2
Damnak Kantuot Khang Tbound	38.3	46.7	58.0	3.7	91.6	104.1	86.2	63.4
Kampong Trach Khang Kaeut	32.0	42.3	63.2	4.7	93.6	88.6	97.6	77.4
Kampong Trach Khang Lech	35.1	44.6	54.0	10.8	81.8	81.3	87.8	58.0
Kanthaor Khang Cheung	36.1	46.7	54.4	9.6	89.4	78.4	89.5	146.2
Kanthaor Khang kaeut	38.5	47.6	57.9	3.7	95.0	107.6	89.9	61.8
Kanthaor Khang Lech	36.1	46.7	59.9	4.0	94.6	100.9	93.3	63.5
Preaek Kroes	39.8	47.7	55.7	4.5	97.3	114.1	92.8	39.7
Ruessei srok Khang Kaeut	40.5	47.9	55.1	4.4	106.4	122.5	98.4	76.9
Ruessei Srok Khang Lech	30.4	42.9	56.0	13.6	99.4	115.6	96.8	79.1
Svay Tong Khang Cheung	29.9	37.7	65.4	4.7	82.5	99.6	80.4	32.5
Svay Tong Khang Tbound	34.1	48.6	57.8	8.1	90.2	97.4	85.7	93.9
District: Kampot	37.2	47.6	57.1	5.7	91.3	93.9	90.8	79.2
Boeng Tuk	33.5	46.3	63.1	3.4	107.8	104.7	113.8	51.0
Chum Kriel	25.6	46.6	65.2	9.2	96.1	95.8	97.0	90.3
Kampong Kraeng	32.4	45.2	62.0	5.6	90.6	99.3	88.6	67.3
Kampong Samraong	36.3	45.1	60.4	3.3	88.1	95.7	87.3	38.1
Kandal	44.9	50.9	51.0	4.1	81.4	90.6	74.1	79.8
Kaoh Touch	37.8	45.7	56.6	5.6	90.4	85.7	96.3	68.8
Koun Satv	40.2	50.8	54.9	4.9	88.1	82.8	92.5	84.1
Meakprang	29.1	42.9	61.6	9.3	100.7	95.5	108.1	74.2
Preaek Tnaot	42.9	52.2	54.8	2.3	97.3	98.8	96.9	80.2
Prey Khmum	39.3	47.5	57.1	3.6	94.3	96.7	94.1	72.9
Prey Thnang	37.5	48.7	55.6	6.9	91.1	87.4	91.6	109.7
Stueng Kaev	38.1	50.5	48.1	13.8	94.1	107.3	84.2	96.5
Thmei	35.5	48.4	61.0	3.5	89.9	102.4	84.2	74.7
Trapeang Pring	34.7	42.6	56.9	8.4	88.2	95.5	87.1	69.0
Trapeang sangkae	39.4	45.5	55.2	5.4	86.0	89.3	85.3	71.2
Trapeang Thum	34.7	41.6	61.4	3.9	91.8	98.1	91.4	52.9
District: Kampong Bay	35.9	45.8	60.0	4.1	90.4	92.6	90.7	69.3
Kampong Kandal	33.3	46.9	63.4	3.3	83.8	90.1	80.4	88.7
Krang Ampil	38.9	50.7	51.6	9.5	84.4	64.8	93.3	140.6
Kampong Bay	28.1	36.4	67.3	4.6	90.5	91.1	95.8	34.6
Andoung Khmaer	38.6	46.8	58.8	2.6	97.6	107.3	95.5	34.6
Traeuy Kaoh	41.3	49.2	55.9	2.8	93.5	100.8	91.3	48.5
PROVINCE: Koh Kong	38.3	49.0	58.3	3.4	100.6	101.3	100.1	100.8
District: Botum Sakor	42.4	50.6	55.3	2.2	98.7	102.3	97.3	73.6
Andoung Tuek	41.7	49.5	55.7	2.5	98.3	105.4	95.0	64.9
Kandaol	41.1	49.6	55.2	3.7	95.8	96.2	98.1	64.0
Ta Nun	41.7	49.7	55.2	3.1	97.5	114.3	86.0	105.6
Thma Sa	43.2	51.5	55.2	1.6	99.8	100.8	99.7	80.2
District: Kiri Sakor	30.3	49.1	68.2	1.5	103.5	83.7	113.5	109.5
Kaoh Sdach	24.9	49.9	74.0	1.2	99.6	71.9	110.5	131.6
Phnhi Meas	32.2	39.6	65.1	2.7	131.5	110.2	144.7	112.5
Preaek Khsach	43.4	51.1	54.8	1.8	103.0	95.5	110.3	80.0
District: Kaoh Kong	41.6	49.5	56.3	2.1	103.0	102.3	104.7	75.0
Chrouy Pras	43.4	49.2	55.7	0.9	102.2	97.1	107.5	50.0
Kaoh Kapi	43.2	54.6	56.0	0.8	100.4	107.5	96.4	42.9
Ta Tai Kraom	43.6	49.0	53.1	3.3	100.4	104.0	102.0	47.6
Trapeang Rung	35.8	42.3	59.5	4.6	109.5	99.0	116.2	111.4
District: Smach Mean Chey	36.2	51.7	61.2	2.6	106.4	93.4	115.0	103.8
Smach Mean Chey	31.2	51.6	67.2	1.6	119.1	98.5	130.8	98.2
Dang Tong	41.0	51.8	55.4	3.6	97.1	87.6	103.9	111.4
Stueng Veang	38.7	52.0	58.6	2.7	91.9	105.2	84.7	75.7
District: Mondol Seima	30.8	40.2	66.4	2.9	97.9	107.2	94.5	83.8
Bak Khlang	30.2	40.0	66.8	3.0	98.4	109.9	94.4	80.9
Peam Krasaob	39.3	42.6	59.4	1.4	84.7	68.1	97.2	100.0
Tuol Kokir	32.2	40.3	64.9	2.9	101.4	115.4	94.2	127.3
District: Srae Ambel	40.6	48.8	53.6	5.8	97.0	106.1	89.0	115.9
Boeng Preav	39.4	48.1	56.7	3.9	92.5	106.0	86.2	65.1
Chi Kha Kraom	43.3	49.8	50.0	6.8	100.3	104.4	98.1	91.2
Chi Kha Leu	42.8	52.6	52.5	4.7	104.7	114.6	98.0	97.2
Chrouy Svay	36.2	44.8	54.4	9.4	101.6	99.5	98.1	135.2
Dang Peaeng	44.9	54.5	52.1	3.0	98.4	112.2	89.4	72.6
Srae Ambel	40.6	47.8	53.2	6.2	94.5	105.0	82.7	148.4
District: Thma Bang	37.2	46.2	57.3	5.5	101.4	106.8	98.4	97.8
Ta Tey Leu	44.9	49.5	49.2	5.9	98.9	110.0	89.7	100.0
Pralay	25.4	31.6	53.9	20.7	98.9	143.9	79.9	109.3
Chumnoab	41.7	49.1	54.6	3.7	87.9	85.7	85.9	166.7
Ruessei Chrum	37.4	44.9	60.8	1.9	104.4	109.6	102.9	62.5
Chi Phat	38.2	48.9	58.4	3.4	101.0	100.4	101.8	94.1
Thmor Donpove	35.6	42.7	56.9	7.5	120.7	156.8	111.1	66.7
District: Kampong Seila	40.3	51.0	57.6	2.1	100.3	103.1	99.4	78.0
Chamkar Luong	45.3	51.8	52.0	2.7	98.4	116.1	86.3	76.9
Kampong Seila	41.2	49.9	56.5	2.3	93.4	92.5	96.1	54.9

Area	Population < 15	Population < 18	Population 15,64	Population >64	Sex Ratio All	Sex Ratio < 15	Sex Ratio 15,64	Sex Ratio >64
	%	%	%	%	males per 100 females	males per 100 females	males per 100 females	males per 100 females
Ou Bak Roteh	37.4	51.2	60.8	1.8	117.4	118.5	116.0	144.0
Stueng Chhay	36.7	52.7	62.3	1.0	98.3	97.9	98.0	133.3
MUNICIPALITY: Sihanoukville	35.0	47.3	60.8	4.1	96.4	99.7	95.4	85.2
District: Mittakpheap	31.1	44.2	65.2	3.7	96.1	98.5	95.7	85.3
Sangkat Muoy	36.1	43.4	62.7	1.2	100.7	110.0	96.6	64.3
Sangkat Pir	26.3	41.7	71.3	2.4	102.0	104.7	102.0	75.6
Sangkat Bei	36.4	50.8	60.8	2.8	95.9	93.1	97.8	93.2
Sangkat Buon	25.7	40.8	67.7	6.6	90.5	93.8	89.6	86.7
Kaoh Rung	39.1	47.5	57.8	3.2	100.6	84.2	112.9	109.1
District: Prey Nob	38.6	50.7	56.7	4.7	96.1	100.3	94.2	85.9
Andoung Thma	37.8	52.0	56.7	5.5	89.0	88.2	91.3	72.7
Boeng Ta Prum	44.7	57.3	52.2	3.1	95.9	101.5	92.5	78.5
Bet Trang	41.6	48.1	50.3	8.1	88.9	92.8	83.3	105.7
Cheung Kou	38.2	51.1	59.1	2.7	98.8	94.7	101.4	102.3
Ou Chrov	41.9	56.6	52.2	5.9	94.0	99.1	91.7	80.9
Ou Oknha Heng	39.7	50.8	55.7	4.6	94.6	98.3	92.1	93.7
Prey Nob	32.1	47.5	64.1	3.9	102.1	119.9	94.6	94.5
Ream	39.5	48.1	56.7	3.7	98.2	106.5	96.2	55.3
Sameakki	39.4	50.9	55.7	4.9	93.6	105.0	88.1	74.4
Samrong	39.4	50.3	56.6	3.9	99.6	103.1	95.4	130.7
Tuek L'ak	43.4	58.4	48.1	8.5	91.9	93.4	81.0	175.4
Tuek Thla	40.5	48.9	56.7	2.8	98.7	105.1	96.4	63.2
Tuol Toetueng	35.6	47.1	56.0	8.5	96.1	83.7	107.7	80.6
Veal Renh	31.2	45.5	63.2	5.7	95.1	106.4	93.7	60.0
District: Stueng Hav	34.1	42.3	62.8	3.1	100.3	102.0	100.7	77.0
Kampenh	37.0	45.4	60.5	2.5	100.2	108.7	95.6	95.2
Ou Treh	33.9	41.0	64.3	1.9	97.4	97.6	98.4	65.8
Tumnob Rolok	33.6	42.3	62.7	3.7	101.6	102.4	102.8	77.3
MUNICIPALITY: Kep	38.8	47.1	57.4	3.8	95.1	104.1	91.0	73.0
District: Damnak Chang'aeur	38.5	47.3	57.8	3.7	94.8	107.4	89.2	66.5
Angkaol	39.4	49.0	57.4	3.2	98.9	115.1	90.1	82.2
Ou Krasar	38.9	47.9	56.7	4.3	92.4	111.5	83.4	65.7
Pong Tuek	37.4	45.3	59.0	3.5	93.3	98.3	92.8	56.9
District: Kaeb	39.5	46.7	56.6	3.9	95.5	97.8	94.6	86.5
Kaeb	39.7	46.5	56.4	3.8	97.7	102.4	94.9	92.9
Prey Thum	39.3	46.8	56.6	4.0	94.2	95.0	94.4	83.0

Source: Commune Database 2003.

Table 45: Health Table I by Coastal Zone, Provinces and Municipalities, Districts and Communes. Referral Hospitals and Health Centres (2003), Consultations at Referral Hospital and Health Centres (2002 and 2003), Doctors, Assistant Doctors, Medium and Primary Nurses at Government Health Facility (2003).

តារាងទី ៤៥: សុខភាពនៅតាមតំបន់ឆ្នេរ ខេត្ត ក្រុង ស្រុក និងឃុំភូមិតំបន់ឆ្នេរ។ ចំនួនមន្ត្រីពេទ្យបង្អែក និងមណ្ឌលសុខភាព (២០០៣) ចំនួនប្រឹក្សានៅតាមមន្ត្រីពេទ្យបង្អែក និងមណ្ឌលសុខភាព (២០០២ និង ២០០៣) ចំនួនវេជ្ជបណ្ឌិត ជំនួយការវេជ្ជបណ្ឌិត ឆ្លុបមធ្យម និងឆ្លុបបឋម តាមរយៈសេវាកម្មសុខភាពរដ្ឋាភិបាល (២០០៣)

Area	Referral Hospital	Health Centre	Consultations 2002	Consultations 2003	Doctors	Assistant Doctors	Medium Nurse	Primary Nurse
	#	#	#	#	#	#	#	#
COASTAL ZONE	8	71	224180	244663	142	97	362	244
PROVINCE: Kampot	4	47	120167	127323	38	36	177	114
District: Angkor Chey	1	7	12589	14852	3	7	21	25
Angk Phnum Touch	0	0			0	0	0	0
Angkor Chey	0	1	1334	1478	0	0	0	2
Champey	0	1	2426	3021	0	0	2	2
Dambouk Khpos	0	1	1517	1805	0	0	1	2
Dan Koum	0	1	1231	1423	0	0	1	0
Daeum Doung	0	1	960	2434	0	0	2	2
Mroum	0	0			0	0	0	0
Phnum Kong	1	1	3596	2368	3	7	14	15
Praphnum	0	1	1525	2323	0	0	1	2
Samlanh	0	0			0	0	0	0
Tani	0	0			0	0	0	0
District: Banteay Meas	0	7	16565	16771	1	0	13	16
Banteay Meas Khang Kaeut	0	0			0	0	0	0
Banteay Meas Khang Lech	0	1	4864	6698	0	0	2	2
Prey Tonle	0	0			0	0	0	0
Samraong Kraom	0	0			0	0	0	0
Samraong Leu	0	1	1672	1204	0	0	1	2
Sdach Kong Khang Cheung	0	0			0	0	0	0
Sdach Kong Khang Lech	0	1	1024	944	0	0	1	3
Sdach Kong Khang Tbound	0	0			0	0	0	0
Tnaot Chong Srang	0	1	2246	1513	0	0	1	2
Trapeang Sala Khang Kaeut	0	1	2016	952	0	0	0	2
Trapeang Sala Khang Lech	0	0			0	0	0	0
Tuk Meas Khang Kaeut	0	0			0	0	0	0
Tuk Meas Khang Lech	0	1	3826	4544	1	0	8	4
Voat Angk Khang Cheung	0	0						
Voat Angk Khang Tbound	0	1	917	916	0	0	0	1
District: Chhuk	1	7	18593	20134	12	3	20	16
Baniev	0	1	2632	2084	0	0	1	1
Takaen	0	1	1778	2005	0	0	1	0
Boeng Nimol	0	0			0	0	0	0
Chhuk	1	1	6910	6641	12	3	17	10
Doun Yay	0	0			0	0	0	0
Krang Sbov	0	1	3404	5273	0	0	1	1
Krang Snay	0	1	2694	2885	0	0	0	3
Lbaeuk	0	0			0	0	0	0
Trapeang Plang	0	0			0	0	0	0
Mean Chey	0	0			0	0	0	0
Neareay	0	1	540	636	0	0	0	0
Satv Pong	0	0			0	0	0	0
Trapeang Bei	0	1	635	610	0	0	0	1
Tramaeng	0	0			0	0	0	0
District: Chum Kiri	0	4	11886	12988	0	1	5	6
Chres	0	1	2113	2587	0	0	1	0
Chumpu Voan	0	1	3784	3553	0	0	2	1
Snay Anhchet	0	0			0	0	0	0
Srae Chaeng	0	1	2683	2625	0	0	1	0
Srae Knong	0	0			0	0	0	0
Srae Samraong	0	0			0	0	0	0
Trapeang Reang	0	1	3306	4223	0	1	1	5
District: Dang Tong	0	5	12217	13366	0	0	9	5
Damnak Sokram	0	0			0	0	0	0
Dang Tong	0	1	2469	3251	0	0	5	2
Khcheay Khang Cheung	0	0			0	0	0	0
Khcheay Khang Tbound	0	0			0	0	0	0
Mean Ritth	0	1	3537	4078	0	0	1	0
Srae Chea Khang Cheung	0	0			0	0	0	0
Srae Chea Khang Tbound	0	1	1654	1409	0	0	1	1
Totung	0	1	566	952	0	0	1	0
Angkor Meas	0	1	3991	3676	0	0	1	2
L'ang	0	0			0	0	0	0
District: Kampong Trach	1	7	12700	13699	7	5	24	10

Area	Referral Hospital	Health Centre	Consultations 2002	Consultations 2003	Doctors	Assistant Doctors	Medium Nurse	Primary Nurse
	#	#	#	#	#	#	#	#
Boeng Sala Khang Cheung	0	0			0	0	0	0
Boeng Sala Khang Tboung	0	1	277	807	0	0	0	0
Damnak Kantuot Khang Cheung	0	0			0	0	0	0
Damnak Kantuot Khang Tboung	0	1	1834	1603	0	0	1	2
Kampong Trach Khang Kaeut	1	1	3426	5278	7	4	18	5
Kampong Trach Khang Lech	0	0			0	0	0	0
Kanthaor Khang Cheung	0	0			0	0	0	0
Kanthaor Khang kaeut	0	0			0	0	0	0
Kanthaor Khang Lech	0	1	2363	2076	0	0	1	0
Preaek Kroes	0	1	1263	1286	0	1	2	0
Ruessei srok Khang Kaeut	0	0			0	0	0	0
Ruessei Srok Khang Lech	0	1	1548	1249	0	0	1	3
Svay Tong Khang Cheung	0	1	1989	1400	0	0	1	0
Svay Tong Khang Tboung	0	0			0	0	0	0
District: Kampot	0	7	25994	24825	0	5	14	7
Boeng Tuk	0	0			0	0	0	0
Chum Kriel	0	0			0	0	0	0
Kampong Kraeng	0	1	5662	5467	0	1	2	1
Kampong Samraong	0	0			0	0	0	0
Kandal	0	1	3747	3693	0	0	1	0
Kaoh Touch	0	1	2999	2107	0	1	2	0
Koun Satv	0	1	3372	3284	0	0	0	1
Meakprang	0	0			0	0	0	0
Preaek Tnaot	0	1	4834	3976	0	1	2	1
Prey Khmum	0	1	3683	4261	0	1	4	1
Prey Thnang	0	0			0	0	0	0
Stueng Kaev	0	0			0	0	0	0
Thmei	0	0			0	0	0	0
Trapeang Pring	0	0			0	0	0	0
Trapeang sangkae	0	1	1697	2037	0	1	3	3
Trapeang Thum	0	0			0	0	0	0
District: Kampong Bav	1	3	9623	10688	15	15	71	29
Kampong Kandal	0	1	777	869	0	0	2	1
Krang Ampil	0	1	1946	1989	0	0	3	2
Kampong Bay	1	0	4525	5620	15	15	65	25
Andoung Khmaer	0	0			0	0	0	0
Traeuy Kaoh	0	1	2375	2210	0	0	1	1
PROVINCE: Koh Kong	2	11	26451	31388	22	24	48	30
District: Botum Sakor	0	2	2137	2379	0	0	2	1
Andoung Tuek	0	1	2137	2175	0	0	2	1
Kandaol	0	0			0	0	0	0
Ta Nun	0	0			0	0	0	0
Thma Sa	0	1	0	204	0	0	0	0
District: Kiri Sakor	0	1	1276	1232	0	1	5	1
Kaoh Sdach	0	1	1276	1232	0	1	5	1
Phnhi Meas	0	0			0	0	0	0
Preaek Khsach	0	0			0	0	0	0
District: Kaoh Kong	0	1	2017	2913	0	1	3	2
Chrouy Pras	0	0			0	0	0	0
Kaoh Kapi	0	0	650	611	0	0	0	1
Ta Tai Kraom	0	0	247	93	0	0	0	1
Trapeang Rung	0	1	1120	2209	0	1	3	0
District: Smach Mean Chey	1	2	3941	5541	13	4	17	8
Smach Mean Chey	1	1	3941	5541	13	4	16	7
Dang Tong	0	1	0	0	0	0	1	1
Stueng Veaeng	0	0			0	0	0	0
District: Mondol Seima	0	1	4374	6050	0	1	2	1
Bak Khlang	0	1	4374	6050	0	1	2	1
Peam Krasaob	0	0			0	0	0	0
Tuol Kokir	0	0			0	0	0	0
District: Srae Ambel	1	2	7802	8188	9	16	16	15
Boeng Preav	1	1	3598	2913	9	16	15	13
Chi Kha Kraom	0	0			0	0	0	0
Chi Kha Leu	0	0			0	0	0	0
Chrouy Svay	0	0			0	0	0	0
Dang Peaeng	0	0			0	0	0	0
Srae Ambel	0	1	4204	5275	0	0	1	2
District: Thma Bang	0	1	1086	757	0	0	2	1
Ta Tey Leu	0	0			0	0	0	0
Pralay	0	0			0	0	0	0
Chumnoab	0	0			0	0	0	0
Ruessei Chrum	0	0			0	0	0	0
Chi Phat	0	1	1086	757	0	0	2	1
Thmor Donpove	0	0			0	0	0	0
District: Kampong Seila	0	1	3818	4328	0	1	1	1
Chamkar Luong	0	0			0	0	0	0
Kampong Seila	0	1	3818	4328	0	1	1	1

Area	Referral Hospital	Health Centre	Consultations 2002	Consultations 2003	Doctors	Assistant Doctors	Medium Nurse	Primary Nurse
	#	#	#	#	#	#	#	#
Ou Bak Roteh	0	0			0	0	0	0
Stueng Chhay	0	0			0	0	0	0
MUNICIPALITY: Sihanoukville	1	9	61516	69736	73	32	122	75
District: Mittakpheap	1	2	22585	24053	70	29	95	50
Sangkat Muoy	0	1	2521	4396	0	2	1	2
Sangkat Pir	0	0			0	0	0	0
Sangkat Bei	0	0			0	0	0	0
Sangkat Buon	1	1	20064	19657	70	27	94	48
Kaoh Rung	0	0			0	0	0	0
District: Prey Nob	0	6	36384	41939	2	1	19	23
Andoung Thma	0	1	5035	9037	1	0	1	4
Boeng Ta Prum	0	0			0	0	0	0
Bet Trang	0	0			0	0	0	0
Cheung Kou	0	0			0	0	0	0
Ou Chrov	0	1	6380	7795	0	0	3	3
Ou Oknha Heng	0	1	2135	4237	0	1	2	4
Prey Nob	0	0			0	0	0	0
Ream	0	1	3382	4690	0	0	6	1
Sameakki	0	0			0	0	0	0
Samrong	0	0			0	0	0	0
Tuek L'ak	0	1	12459	6339	0	0	2	5
Tuek Thla	0	0			0	0	0	0
Tuol Toetueng	0	0			0	0	0	0
Veal Renh	0	1	6993	9841	1	0	5	6
District: Stueng Hav	0	1	2547	3744	1	2	8	2
Kampenh	0	0			0	0	0	0
Ou Treh	0	1	2547	3744	1	2	8	2
Tumnob Rokok	0	0			0	0	0	0
MUNICIPALITY: Kep	1	4	16046	16216	9	5	15	25
District: Damnak Chang'aur	1	3	16046	16216	6	3	6	15
Angkaol	1	1	9855	10903	6	1	4	8
Ou Krasar	0	1	3354	2992	0	0	2	4
Pong Tuek	0	1	2837	2321	0	2	0	3
District: Kaeb	0	1	0	0	3	2	9	10
Kaeb	0	0			0	0	0	0
Prey Thum	0	1	0	0	3	2	9	10

Source: Ministry of Planning, National Institute of Statistics, Administrative and Health Facility Mapping 2003.

Table 46: Health Table II by Coastal Zone, Provinces and Municipalities, Districts and Communes. Medium and Primary Midwives (2003). Beds available at Health Facilities (2003), Traditional and Government Trained Midwives Aggregated from Village Level (2003), Use of Traditional and Government Trained Midwives (2003).

តារាងទី ៤៦: សុខភាពនៅតាមតំបន់ឆ្នេរ ខេត្ត ក្រុង ស្រុក និងឃុំភូមិតំបន់ឆ្នេរ។ ចំនួនឆ្លុះមធ្យម និងឆ្លុះបឋម (២០០៣) ។ ចំនួនគ្រួសារជំងឺដែលមាននៅសេវាកម្មសុខភាព (២០០៣). ចំនួនគ្រួសារបុរាណ និងឆ្លុះបណ្ឌិតិបាលដែលទទួលបានការបណ្តុះបណ្តាលសរុបពីតាមភូមិ (២០០៣). ចំនួនគ្រួសារប្រើប្រាស់ ឆ្លុះបុរាណ និងឆ្លុះបណ្ឌិតិបាលដែលទទួលបានការបណ្តុះបណ្តាល (២០០៣)

Area	Medium Midwife #	Primary Midwife #	Beds #	Traditional Midwives #	Government Trained Midwife #	Traditional Midwife Use # families in past 12 months	Government Trained Midwife Use # families in past 12 months
COASTAL ZONE	163	97	773	1101	591	5773	5294
PROVINCE: Kampot	65	46	478	673	404	4103	3704
District: Angkor Chev	10	9	79	65	63	364	704
Angk Phnum Touch	0	0	0	4	2	6	73
Angkor Chev	1	1	3	4	2	4	28
Champey	1	1	2	10	4	82	29
Dambouk Khpos	0	1	3	19	4	119	104
Dan Koum	0	2	2	3	7	13	90
Daeum Doung	0	0	3	1	2	3	46
Mroum	0	0	0	3	14	60	24
Phnum Kong	8	3	63	8	15	34	120
Praphnum	0	1	3	4	5	2	66
Samlanh	0	0	0	5	4	20	46
Tani	0	0	0	4	4	21	78
District: Banteay Meas	8	4	30	99	66	595	542
Banteay Meas Khang Kaeut	0	0	0	13	4	71	22
Banteay Meas Khang Lech	1	1	3	9	5	21	80
Prey Tonle	0	0	0	6	2	31	30
Samraong Kraom	0	0	0	8	7	23	48
Samraong Leu	2	0	3	2	5	2	44
Sdach Kong Khang Cheung	0	0	0	9	3	68	24
Sdach Kong Khang Lech	1	0	3	7	4	34	13
Sdach Kong Khang Tbound	0	0	0	7	2	37	3
Tnaot Chong Srang	0	1	4	13	1	88	15
Trapeang Sala Khang Kaeut	0	2	1	2	4	17	48
Trapeang Sala Khang Lech	0	0	0	3	3	8	48
Tuk Meas Khang Kaeut	0	0	0	6	1	35	36
Tuk Meas Khang Lech	4	0	13	9	9	51	43
Voat Angk Khang Cheung				1	6	43	67
Voat Angk Khang Tbound	0	0	3	4	10	66	21
District: Chhuk	5	5	115	151	36	850	272
Baniev	1	1	3	2	5	68	29
Takaen	0	0	2	30	3	153	12
Boeng Nimol	0	0	0	13	1	57	2
Chhuk	3	1	105	7	4	76	38
Doun Yay	0	0	0	15	5	30	28
Krang Sbov	0	1	2	12	6	58	38
Krang Snay	1	2	3	12	1	62	19
Lbaeuk	0	0	0	14	4	68	16
Trapeang Plang	0	0	0	13	0	99	9
Mean Chey	0	0	0	3	1	58	2
Neareay	0	0	0	8	2	26	19
Satv Pong	0	0	0	4	2	20	35
Trapeang Bei	0	0	0	9	1	31	1
Tramaeng	0	0	0	9	1	44	24
District: Chum Kiri	1	4	28	76	37	358	230
Chres	0	0	2	9	6	16	40
Chumpu Voan	0	1	3	18	1	93	34
Snay Anhchet	0	0	0	8	1	65	21
Srae Chaeng	0	1	2	15	5	72	40
Srae Knong	0	0	0	12	3	89	10
Srae Samraong	0	0	0	3	8	12	43
Trapeang Reang	1	2	21	11	13	11	42
District: Dang Tong	2	6	19	93	30	634	267
Damnak Sokram	0	0	0	8	0	94	14
Dang Tong	1	2	10	19	11	102	66
Khcheay Khang Cheung	0	0	0	3	0	45	6
Khcheay Khang Tbound	0	0	0	5	3	24	41
Mean Rith	0	1	3	13	2	52	5
Srae Chea Khang Cheung	0	0	0	8	1	66	4
Srae Chea Khang Tbound	0	1	3	3	6	5	10
Totung	1	0	0	5	1	71	47
Angkor Meas	0	2	3	19	3	120	18
L'ang	0	0	0	10	3	55	56

Area	Medium Midwife	Primary Midwife	Beds	Traditional Midwives	Government Trained Midwife	Traditional Midwife Use	Government Trained Midwife Use
	#	#	#	#	#	# families in past 12 months	# families in past 12 months
District: Kampong Trach	6	3	20	55	88	315	642
Boeng Sala Khang Cheung	0	0	0	4	2	26	83
Boeng Sala Khang Tbound	1	0	3	8	2	61	19
Damnak Kantuot Khang Cheung	0	0	0	9	6	32	37
Damnak Kantuot Khang Tbound	0	1	3	6	7	11	87
Kampong Trach Khang Kaeut	5	1	3	0	12	0	94
Kampong Trach Khang Lech	0	0	0	2	7	22	62
Kanthaor Khang Cheung	0	0	0	4	3	3	9
Kanthaor Khang kaeut	0	0	0	0	8	0	39
Kanthaor Khang Lech	0	0	2	3	11	14	21
Preaek Kroes	0	0	3	0	13	3	80
Ruessei srok Khang Kaeut	0	0	0	4	1	44	16
Ruessei Srok Khang Lech	0	0	3	5	5	44	34
Svay Tong Khang Cheung	0	1	3	2	2	11	43
Svay Tong Khang Tbound	0	0	0	8	9	44	18
District: Kampot	10	9	30	115	42	914	514
Boeng Tuk	0	0	0	5	3	24	41
Chum Kriel	0	0	0	3	4	2	68
Kampong Kraeng	3	0	4	8	2	52	22
Kampong Samraong	0	0	0	1	1	5	35
Kandal	1	3	4	12	6	151	43
Kaoh Touch	0	1	6	8	5	67	29
Koun Satv	4	1	4	8	1	110	39
Meakprang	0	0	0	2	1	2	36
Preaek Tnaot	0	0	2	7	1	67	15
Prey Khmum	1	1	4	9	4	33	37
Prey Thnang	0	0	0	15	2	79	18
Stueng Kaev	0	0	0	12	1	71	10
Thmei	0	0	0	9	2	124	68
Trapeang Pring	0	0	0	9	1	111	10
Trapeang sangkae	1	3	6	5	6	9	22
Trapeang Thum	0	0	0	2	2	7	21
District: Kampong Bav	23	6	157	19	42	73	533
Kampong Kandal	1	1	0	0	19	0	266
Krang Ampil	3	1	0	1	5	0	94
Kampong Bav	17	4	155	0	5	0	36
Andoung Khmaer	0	0	0	13	12	31	97
Traeuy Kaoh	2	0	2	5	1	42	40
PROVINCE: Koh Kong	17	16	115	275	117	797	715
District: Botum Sakor	0	1	12	55	13	194	79
Andoung Tuek	0	0	12	16	5	54	17
Kandaol	0	0	0	11	4	23	3
Ta Nun	0	0	0	13	0	32	0
Thma Sa	0	1	0	15	4	85	59
District: Kiri Sakor	1	0	5	21	8	42	34
Kaoh Sdach	1	0	5	5	1	18	18
Phnhi Meas	0	0	0	4	3	4	10
Preaek Khsach	0	0	0	12	4	20	6
District: Kaoh Kong	0	0	3	13	9	208	80
Chrouy Pras	0	0	0	1	3	3	42
Kaoh Kapi	0	0	0	2	0	139	8
Ta Tai Kraom	0	0	0	4	4	42	21
Trapeang Rung	0	0	3	6	2	24	9
District: Smach Mean Chey	8	5	44	9	8	44	112
Smach Mean Chey	8	5	44	1	7	20	96
Dang Tong	0	0	0	0	0	0	0
Stueng Veang	0	0	0	8	1	24	16
District: Mondol Seima	3	0	12	21	10	47	69
Bak Khlang	3	0	12	14	9	36	54
Peam Krasaob	0	0	0	3	0	3	4
Tuol Kokir	0	0	0	4	1	8	11
District: Srae Ambel	5	9	37	104	43	126	124
Boeng Preav	4	9	37	14	15	30	30
Chi Kha Kraom	0	0	0	17	6	30	16
Chi Kha Leu	0	0	0	14	9	4	53
Chrouy Svay	0	0	0	25	9	44	23
Dang Peang	0	0	0	34	4	18	2
Srae Ambel	1	0	0	0	0	0	0
District: Thma Bang	0	1	0	28	5	89	22
Ta Tey Leu	0	0	0	3	0	10	9
Pralay	0	0	0	8	0	12	0
Chumnoab	0	0	0	4	0	6	0
Ruessei Chrum	0	0	0	3	0	17	1
Chi Phat	0	1	0	6	5	30	11
Thmor Donpove	0	0	0	4	0	14	1
District: Kampong Seila	0	0	2	24	21	47	195
Chamkar Luong	0	0	0	2	8	10	38

Area	Medium Midwife	Primary Midwife	Beds	Traditional Midwives	Government Trained Midwife	Traditional Midwife Use	Government Trained Midwife Use
	#	#	#	#	#	# families in past 12 months	# families in past 12 months
Kampong Seila	0	0	2	17	4	25	89
Ou Bak Roteh	0	0	0	2	5	0	48
Stueng Chhay	0	0	0	3	4	12	20
MUNICIPALITY: Sihanoukville	76	33	160	129	49	653	615
District: Mittakpheap	72	22	160	8	0	67	3
Sangkat Muoy	4	0	0	0	0	0	0
Sangkat Pir	0	0	0	0	0	0	0
Sangkat Bei	0	0	0	0	0	0	0
Sangkat Buon	68	22	160	0	0	0	0
Kaoh Rung	0	0	0	8	0	67	3
District: Prey Nob	3	11	0	110	43	531	458
Andoung Thma	0	4	0	6	0	0	66
Boeng Ta Prum	0	0	0	7	2	44	60
Bet Trang	0	0	0	5	1	8	12
Cheung Kou	0	0	0	25	8	78	42
Ou Chrov	0	2	0	3	5	33	16
Ou Oknha Heng	0	1	0	11	3	74	34
Prey Nob	0	0	0	2	5	6	41
Ream	0	2	0	4	5	10	62
Sameakki	0	0	0	7	1	33	4
Samrong	0	0	0	17	1	105	24
Tuek L'ak	1	1	0	2	3	44	14
Tuek Thla	0	0	0	11	2	44	18
Tuol Toetung	0	0	0	3	1	29	30
Veal Renh	2	1	0	7	6	23	35
District: Stueng Hav	1	0	0	11	6	55	154
Kampenh	0	0	0	2	0	3	40
Ou Treh	1	0	0	4	2	10	25
Tumnob Rolok	0	0	0	5	4	42	89
MUNICIPALITY: Kep	5	2	20	24	21	220	260
District: Damnak Chang'aur	4	2	20	15	14	181	147
Angkaol	2	0	8	4	5	21	81
Ou Krasar	1	0	6	6	3	115	29
Pong Tuek	1	2	6	5	6	45	37
District: Kaeb	1	0	0	9	7	39	113
Kaeb	0	0	0	2	4	0	24
Prey Thum	1	0	0	7	3	39	89

Sources: Ministry of Planning, National Institute of Statistics, Administrative and Health Facility Mapping 2003 (Medium and Primary Midwives and Beds at Government Health Facilities).
Commune Database 2003 (Traditional Midwives, Government Trained Midwives and their respective Usage)

Table 47: Education Table I by Coastal Zone, Provinces and Municipalities, Districts and Communes. Literacy Levels Above 15 Years of Age, Overall, Male and Female (2003). Literacy between 15 and 17 Years of Age, Overall, Male and Female (2003).

តារាងទី ៤៧: ការអប់រំតាមតំបន់ឆ្នេរ ខេត្ត ក្រុង ស្រុក និងឃុំក្នុងតំបន់ឆ្នេរ។ កិត្តិយសកម្មរបស់ ប្រជាជនអាយុលើសពី១៥ ឆ្នាំ ក្របណ្ណាល័យទាំងអស់ បុរស និង ស្ត្រី (២០០៣)។ កិត្តិយសកម្មរបស់ប្រជាជនអាយុពី១៥ ទៅ ១៧ឆ្នាំ ក្របណ្ណាល័យទាំងអស់ បុរស និង ស្ត្រី (២០០៣)

Area	Literacy >15	Male Literacy >15	Female Literacy >15	Literacy 15-17	Male Literacy 15-17	Female Literacy 15-17
	% of age group	% of age group	% of age group	% of age group	% of age group	% of age group
COASTAL ZONE	80%	84%	78%	84%	86%	83%
PROVINCE: Kampot	81%	85%	78%	86%	87%	85%
District: Angkor Chev	90%	93%	88%	94%	94%	94%
Angk Phnum Touch	92%	98%	86%	95%	98%	91%
Angkor Chey	91%	95%	87%	97%	97%	96%
Champey	89%	94%	84%	97%	98%	97%
Dambouk Khpos	89%	91%	87%	91%	91%	91%
Dan Koum	93%	94%	92%	89%	83%	94%
Daeum Doung	89%	92%	86%	90%	88%	92%
Mroum	93%	93%	92%	91%	91%	92%
Phnum Kong	91%	92%	90%	96%	97%	95%
Praphnum	88%	95%	83%	88%	87%	89%
Samlanh	89%	92%	86%	97%	97%	97%
Tani	93%	96%	90%	99%	100%	99%
District: Banteay Meas	85%	88%	82%	87%	87%	86%
Banteay Meas Khang Kaeut	91%	96%	88%	98%	98%	97%
Banteay Meas Khang Lech	86%	92%	81%	85%	89%	82%
Prey Tonle	63%	76%	50%	73%	71%	76%
Samraong Kraom	87%	87%	86%	91%	91%	90%
Samraong Leu	87%	87%	87%	88%	90%	87%
Sdach Kong Khang Cheung	86%	91%	81%	85%	86%	84%
Sdach Kong Khang Lech	74%	79%	70%	81%	76%	85%
Sdach Kong Khang Tbound	81%	88%	75%	93%	95%	90%
Tnaot Chong Srang	69%	76%	63%	76%	72%	79%
Trapeang Sala Khang Kaeut	84%	85%	83%	84%	83%	84%
Trapeang Sala Khang Lech	90%	92%	89%	81%	81%	82%
Tuk Meas Khang Kaeut	86%	89%	84%	86%	85%	88%
Tuk Meas Khang Lech	87%	88%	85%	89%	90%	89%
Voat Angk Khang Cheung	90%	93%	88%	95%	95%	94%
Voat Angk Khang Tbound	87%	88%	86%	84%	88%	80%
District: Chhuk	79%	82%	77%	84%	85%	84%
Baniev	90%	94%	87%	93%	96%	89%
Takaen	60%	64%	56%	67%	72%	60%
Boeng Nimol	75%	78%	73%	78%	81%	75%
Chhuk	87%	90%	84%	81%	80%	81%
Doun Yay	90%	93%	88%	96%	95%	96%
Krang Shov	86%	87%	85%	92%	94%	90%
Krang Snay	78%	82%	75%	79%	81%	77%
Lbaeuk	64%	65%	63%	87%	88%	84%
Trapeang Plang	61%	64%	57%	60%	64%	50%
Mean Chey	87%	91%	84%	92%	93%	92%
Neareay	82%	86%	79%	85%	85%	84%
Satv Pong	85%	91%	81%	95%	97%	93%
Trapeang Bei	87%	89%	85%	91%	93%	89%
Tramaeng	80%	84%	77%	85%	80%	88%
District: Chum Kiri	73%	77%	70%	79%	79%	79%
Chres	73%	78%	69%	73%	78%	66%
Chumpu Voan	67%	73%	60%	87%	91%	83%
Snay Anhchet	72%	77%	68%	89%	91%	87%
Srae Chaeng	71%	71%	71%	79%	76%	82%
Srae Knong	71%	75%	68%	72%	64%	80%
Srae Samraong	80%	82%	78%	82%	81%	84%
Trapeang Reang	82%	86%	79%	77%	78%	75%
District: Dang Tong	72%	75%	70%	78%	82%	75%
Damnak Sokram	88%	92%	85%	100%	100%	100%
Dang Tong	72%	72%	72%	82%	83%	82%
Khcheay Khang Cheung	70%	84%	58%	76%	91%	60%
Khcheay Khang Tbound	69%	73%	65%	65%	79%	52%
Mean Ritth	66%	71%	61%	80%	83%	77%
Srae Chea Khang Cheung	78%	83%	74%	98%	97%	98%
Srae Chea Khang Tbound	94%	95%	94%	97%	96%	97%
Totung	87%	89%	86%	91%	93%	88%
Angkor Meas	53%	58%	48%	62%	62%	61%
L'ang	59%	54%	63%	68%	73%	63%
District: Kampong Trach	81%	86%	76%	89%	91%	87%

Area	Literacy >15	Male Literacy >15	Female Literacy >15	Literacy 15-17	Male Literacy 15-17	Female Literacy 15-17
	% of age group	% of age group	% of age group	% of age group	% of age group	% of age group
Boeng Sala Khang Cheung	79%	88%	70%	91%	93%	89%
Boeng Sala Khang Tbound	76%	85%	68%	87%	90%	85%
Damnak Kantuot Khang Cheung	84%	90%	79%	94%	95%	94%
Damnak Kantuot Khang Tbound	92%	92%	92%	96%	94%	97%
Kampong Trach Khang Kaeut	89%	96%	83%	98%	98%	98%
Kampong Trach Khang Lech	78%	81%	75%	90%	90%	90%
Kanthaor Khang Cheung	85%	93%	78%	78%	91%	68%
Kanthaor Khang kaeut	82%	94%	72%	99%	100%	99%
Kanthaor Khang Lech	90%	95%	86%	97%	99%	94%
Preaek Kroes	83%	86%	81%	85%	91%	77%
Ruessei srok Khang Kaeut	90%	93%	88%	93%	95%	91%
Ruessei Srok Khang Lech	79%	82%	76%	86%	89%	82%
Svay Tong Khang Cheung	71%	73%	70%	89%	88%	89%
Svay Tong Khang Tbound	48%	57%	40%	65%	66%	64%
District: Kampot	78%	81%	76%	83%	85%	82%
Boeng Tuk	88%	92%	83%	92%	95%	88%
Chum Kriel	85%	86%	84%	85%	85%	84%
Kampong Kraeng	84%	88%	81%	95%	96%	95%
Kampong Samraong	73%	79%	68%	95%	97%	93%
Kandal	83%	85%	82%	73%	78%	69%
Kaoh Touch	78%	80%	75%	84%	82%	85%
Koun Satv	82%	84%	79%	83%	83%	84%
Meakprang	90%	90%	90%	100%	99%	100%
Preaek Tnaot	77%	80%	75%	77%	75%	79%
Prey Khmum	91%	96%	86%	90%	90%	89%
Prey Thnang	60%	66%	55%	77%	82%	72%
Stueng Kaev	47%	48%	46%	57%	52%	61%
Thmei	70%	72%	68%	77%	82%	72%
Trapeang Pring	71%	65%	77%	78%	79%	76%
Trapeang sangkae	89%	94%	84%	99%	99%	98%
Trapeang Thum	94%	95%	92%	97%	100%	94%
District: Kampong Bay	90%	93%	87%	95%	95%	95%
Kampong Kandal	96%	98%	95%	99%	99%	99%
Krang Ampil	94%	96%	91%	96%	95%	96%
Kampong Bay	99%	99%	99%	99%	99%	99%
Andoung Khmaer	85%	90%	79%	96%	97%	96%
Traeuy Kaoh	73%	79%	68%	79%	81%	76%
PROVINCE: Koh Kong	71%	76%	67%	77%	81%	73%
District: Botum Sakor	61%	66%	57%	74%	75%	73%
Andoung Tuek	65%	72%	58%	66%	71%	62%
Kandaol	64%	78%	51%	87%	89%	84%
Ta Nun	17%	17%	17%	22%	4%	43%
Thma Sa	64%	66%	63%	80%	82%	79%
District: Kiri Sakor	81%	84%	78%	88%	90%	86%
Kaoh Sdach	88%	91%	85%	96%	97%	95%
Phnhi Meas	57%	60%	52%	45%	37%	50%
Preaek Khsach	71%	76%	65%	41%	39%	43%
District: Kaoh Kong	69%	75%	63%	71%	75%	67%
Chrouy Pras	67%	72%	62%	96%	96%	96%
Kaoh Kapi	70%	77%	63%	64%	69%	60%
Ta Tai Kraom	62%	69%	55%	61%	63%	59%
Trapeang Rung	73%	77%	68%	69%	77%	60%
District: Smach Mean Chey	91%	94%	87%	93%	96%	90%
Smach Mean Chey	95%	96%	94%	97%	96%	97%
Dang Tong	88%	94%	81%	90%	97%	78%
Stueng Veaeng	81%	83%	78%	81%	83%	80%
District: Mondol Seima	76%	80%	72%	53%	50%	55%
Bak Khlang	78%	82%	74%	54%	51%	56%
Peam Krasaob	79%	88%	70%	70%	75%	67%
Tuol Kokir	43%	50%	36%	39%	32%	46%
District: Srae Ambel	60%	62%	58%	66%	68%	65%
Boeng Preav	72%	77%	68%	77%	84%	71%
Chi Kha Kraom	66%	79%	54%	74%	71%	76%
Chi Kha Leu	54%	71%	37%	67%	81%	54%
Chrouy Svay	42%	47%	37%	60%	57%	62%
Dang Peaeng	35%	36%	34%	57%	53%	61%
Srae Ambel	70%	65%	74%	64%	63%	65%
District: Thma Bang	60%	65%	54%	53%	54%	52%
Ta Tey Leu	19%	26%	14%	24%	18%	33%
Pralay	39%	44%	35%	65%	79%	55%
Chumnoab	91%	100%	84%	69%	100%	38%
Ruessei Chrum	85%	85%	85%	68%	67%	69%
Chi Phat	62%	70%	54%	50%	50%	49%
Thmor Donpove	47%	39%	55%	58%	42%	86%
District: Kampong Seila	66%	73%	58%	73%	77%	70%
Chamkar Luong	56%	54%	58%	83%	82%	84%
Kampong Seila	57%	70%	46%	68%	71%	66%

Area	Literacy >15	Male Literacy >15	Female Literacy >15	Literacy 15-17	Male Literacy 15-17	Female Literacy 15-17
	% of age group	% of age group	% of age group	% of age group	% of age group	% of age group
Ou Bak Roteh	78%	83%	73%	84%	86%	83%
Stueng Chhay	78%	82%	74%	61%	75%	46%
MUNICIPALITY: Sihanoukville	83%	85%	80%	85%	85%	84%
District: Mittakpheap	93%	94%	91%	93%	93%	93%
Sangkat Muoy	89%	93%	86%	85%	90%	80%
Sangkat Pir	99%	99%	99%	99%	99%	99%
Sangkat Bei	93%	95%	92%	94%	93%	95%
Sangkat Buon	96%	96%	95%	96%	95%	96%
Kaoh Rung	28%	38%	16%	26%	32%	16%
District: Prey Nob	74%	77%	71%	77%	78%	76%
Andoung Thma	70%	73%	68%	78%	78%	78%
Boeng Ta Prum	58%	54%	61%	60%	57%	63%
Bet Trang	75%	76%	73%	54%	47%	60%
Cheung Kou	76%	76%	75%	85%	83%	86%
Ou Chrov	61%	64%	58%	58%	61%	55%
Ou Oknha Heng	81%	86%	76%	79%	85%	75%
Prey Nob	89%	91%	88%	94%	94%	94%
Ream	86%	89%	83%	82%	83%	81%
Sameakki	69%	76%	62%	83%	79%	87%
Samrong	76%	83%	69%	80%	82%	79%
Tuek L'ak	80%	83%	76%	76%	89%	66%
Tuek Thla	57%	57%	58%	67%	65%	69%
Tuol Toetueng	41%	47%	35%	50%	55%	46%
Veal Renh	83%	91%	76%	89%	89%	88%
District: Stueng Hav	78%	81%	74%	82%	84%	80%
Kampenh	86%	92%	80%	92%	91%	93%
Ou Treh	84%	87%	80%	72%	76%	69%
Tumnob Rolok	73%	77%	70%	84%	85%	82%
MUNICIPALITY: Kep	87%	89%	86%	83%	86%	79%
District: Damnak Chang'aur	86%	88%	84%	81%	85%	76%
Angkaol	81%	84%	77%	79%	87%	69%
Ou Krasar	84%	85%	83%	76%	78%	74%
Pong Tuek	93%	94%	92%	86%	89%	83%
District: Kaeb	89%	89%	88%	87%	88%	87%
Kaeb	86%	86%	86%	92%	92%	92%
Prey Thum	90%	91%	89%	85%	86%	84%

Source: Commune Database 2003.

Table 48: Education Table II by Coastal Zone, Provinces and Municipalities, Districts and Communes. Literacy between 18 and 64 Years of Age, Overall, Male and Female (2003). Literacy Levels Above 64 Years of Age, Overall, Male and Female (2003).

តារាងទី ៤៨: ការអប់រំតាមតំបន់ឆ្នេរ ខេត្ត ក្រុង ស្រុក និងឃុំភូមិតំបន់ឆ្នេរ។ កម្រិតអក្ខរកម្មរបស់ប្រជាជនអាយុ ពី១៨ ទៅ ៦៤ ឆ្នាំ. ភាគរយសរុបទាំងអស់. ភាគរយបុរស និងស្ត្រី (២០០៣)។ កម្រិតអក្ខរកម្មរបស់ប្រជាជនអាយុលើសពី ៦៤ ឆ្នាំ. ភាគរយសរុបទាំងអស់. ភាគរយបុរស និងស្ត្រី (២០០៣)។

Area	Literacy 18-64	Male Literacy 18-64	Female Literacy 18-64	Literacy >64	Male Literacy >64	Female Literacy >64
	% of age group	% of age group	% of age group	% of age group	% of age group	% of age group
COASTAL ZONE	82%	85%	79%	57%	65%	51%
PROVINCE: Kampot	83%	86%	80%	58%	65%	52%
District: Angkor Chey	92%	95%	90%	69%	79%	62%
Angk Phnum Touch	93%	97%	89%	72%	99%	59%
Angkor Chey	94%	97%	90%	57%	69%	48%
Champey	90%	95%	84%	55%	64%	49%
Dambouk Khpos	89%	91%	88%	77%	83%	73%
Dan Koum	96%	98%	95%	66%	71%	61%
Daeum Doung	90%	93%	88%	63%	81%	55%
Mroum	94%	94%	94%	83%	86%	81%
Phnum Kong	93%	93%	92%	72%	76%	70%
Praphnum	92%	97%	87%	64%	87%	45%
Samlanh	92%	94%	89%	54%	66%	45%
Tani	94%	96%	92%	75%	91%	66%
District: Banteay Meas	87%	90%	84%	61%	68%	55%
Banteay Meas Khang Kaeut	92%	96%	89%	79%	92%	66%
Banteay Meas Khang Lech	90%	94%	86%	55%	75%	43%
Prey Tonle	63%	79%	47%	23%	28%	20%
Samraong Kraom	89%	89%	90%	49%	54%	45%
Samraong Leu	90%	88%	92%	70%	78%	63%
Sdach Kong Khang Cheung	88%	93%	82%	39%	47%	35%
Sdach Kong Khang Lech	74%	81%	68%	59%	52%	62%
Sdach Kong Khang Tbound	82%	89%	75%	44%	49%	42%
Tnaot Chong Srang	69%	78%	61%	41%	43%	39%
Trapeang Sala Khang Kaeut	89%	90%	89%	46%	50%	43%
Trapeang Sala Khang Lech	93%	96%	91%	66%	54%	73%
Tuk Meas Khang Kaeut	88%	92%	85%	71%	74%	69%
Tuk Meas Khang Lech	90%	91%	89%	40%	50%	31%
Voat Angk Khang Cheung	91%	94%	89%	79%	86%	74%
Voat Angk Khang Tbound	89%	89%	89%	55%	63%	45%
District: Chhuk	80%	82%	77%	58%	66%	51%
Baniev	91%	94%	89%	65%	87%	52%
Takaen	59%	62%	55%	57%	60%	54%
Boeng Nimol	77%	78%	76%	49%	55%	46%
Chhuk	89%	93%	86%	68%	77%	61%
Doun Yay	91%	93%	88%	64%	73%	56%
Krang Sbov	86%	86%	86%	74%	85%	64%
Krang Snay	80%	84%	77%	42%	43%	42%
Lbaeuk	61%	61%	60%	51%	47%	54%
Trapeang Plang	62%	65%	59%	43%	57%	31%
Mean Chey	88%	92%	85%	60%	70%	52%
Neareay	84%	88%	80%	61%	69%	53%
Satv Pong	85%	90%	80%	72%	85%	64%
Trapeang Bei	87%	89%	85%	61%	74%	50%
Tramaeng	82%	88%	77%	37%	51%	26%
District: Chum Kiri	74%	78%	70%	49%	57%	43%
Chres	76%	80%	72%	50%	49%	51%
Chumpu Voan	65%	72%	58%	43%	49%	39%
Snay Anhchet	71%	75%	68%	36%	59%	25%
Srae Chaeng	70%	71%	69%	47%	48%	47%
Srae Knong	73%	79%	68%	47%	59%	40%
Srae Samraong	82%	85%	80%	60%	66%	55%
Trapeang Reang	86%	90%	83%	48%	61%	32%
District: Dang Tong	74%	76%	71%	46%	48%	45%
Damnak Sokram	88%	91%	86%	41%	66%	24%
Dang Tong	72%	71%	72%	49%	57%	43%
Khcheay Khang Cheung	73%	87%	62%	11%	14%	10%
Khcheay Khang Tbound	73%	75%	71%	25%	35%	17%
Mean Ritth	64%	70%	59%	34%	38%	30%
Srae Chea Khang Cheung	78%	81%	75%	58%	75%	39%
Srae Chea Khang Tbound	96%	97%	95%	55%	50%	58%
Totung	90%	91%	89%	46%	47%	46%
Angkor Meas	51%	58%	44%	43%	45%	42%
L'ang	56%	48%	64%	54%	45%	63%
District: Kampong Trach	83%	88%	79%	54%	65%	46%

Area	Literacy 18-64	Male Literacy 18-64	Female Literacy 18-64	Literacy >64	Male Literacy >64	Female Literacy >64
	% of age group	% of age group	% of age group	% of age group	% of age group	% of age group
Boeng Sala Khang Cheung	79%	89%	70%	56%	68%	44%
Boeng Sala Khang Tboung	74%	84%	65%	60%	79%	41%
Damnak Kantuot Khang Cheung	84%	90%	78%	74%	80%	68%
Damnak Kantuot Khang Tboung	93%	92%	94%	69%	83%	61%
Kampong Trach Khang Kaeut	90%	96%	85%	54%	84%	30%
Kampong Trach Khang Lech	84%	86%	81%	42%	42%	42%
Kanthaor Khang Cheung	89%	96%	82%	77%	84%	68%
Kanthaor Khang kaeut	82%	94%	72%	39%	65%	24%
Kanthaor Khang Lech	92%	95%	90%	46%	73%	30%
Preaek Kroes	87%	87%	88%	36%	46%	32%
Ruessei srok Khang Kaeut	95%	98%	93%	30%	32%	28%
Ruessei Srok Khang Lech	80%	83%	78%	70%	72%	67%
Svay Tong Khang Cheung	73%	74%	73%	20%	15%	21%
Svay Tong Khang Tboung	47%	59%	37%	24%	28%	20%
District: Kampot	80%	82%	78%	55%	60%	52%
Boeng Tuk	90%	95%	85%	40%	21%	50%
Chum Kriel	89%	90%	87%	67%	62%	73%
Kampong Kraeng	86%	90%	83%	45%	48%	44%
Kampong Samraong	72%	76%	68%	31%	63%	19%
Kandal	87%	88%	86%	56%	54%	58%
Kaoh Touch	78%	81%	76%	63%	71%	57%
Koun Satv	84%	87%	82%	51%	60%	43%
Meakprang	92%	91%	92%	67%	60%	72%
Preaek Tnaot	79%	82%	76%	45%	57%	35%
Prey Khmum	93%	98%	88%	67%	86%	53%
Prey Thnang	57%	63%	53%	49%	59%	40%
Stueng Kaev	44%	44%	44%	47%	56%	38%
Thmei	70%	70%	70%	38%	51%	28%
Trapeang Pring	70%	61%	77%	74%	74%	75%
Trapeang sangkae	92%	96%	88%	49%	63%	39%
Trapeang Thum	96%	97%	95%	58%	50%	62%
District: Kampong Bay	90%	93%	87%	74%	84%	68%
Kampong Kandal	96%	98%	95%	90%	91%	89%
Krang Ampil	96%	98%	94%	81%	90%	68%
Kampong Bay	100%	100%	99%	90%	88%	90%
Andoung Khmaer	85%	90%	80%	43%	52%	39%
Traeuy Kaoh	74%	80%	69%	51%	68%	43%
PROVINCE: Koh Kong	72%	76%	67%	49%	59%	39%
District: Botum Sakor	61%	66%	56%	25%	33%	20%
Andoung Tuek	66%	74%	58%	36%	34%	38%
Kandaol	62%	76%	47%	40%	63%	26%
Ta Nun	16%	18%	14%	16%	32%	0%
Thma Sa	63%	64%	63%	11%	19%	5%
District: Kiri Sakor	79%	82%	77%	48%	54%	40%
Kaoh Sdach	84%	87%	82%	75%	80%	68%
Phnhi Meas	61%	64%	55%	6%	11%	0%
Preaek Khsach	77%	83%	71%	30%	33%	27%
District: Kaoh Kong	69%	75%	63%	52%	70%	39%
Chrouy Pras	63%	70%	57%	87%	100%	80%
Kaoh Kapi	73%	80%	66%	0%	0%	0%
Ta Tai Kraom	64%	70%	58%	29%	50%	19%
Trapeang Rung	73%	77%	70%	69%	82%	54%
District: Smach Mean Chey	91%	95%	87%	74%	75%	73%
Smach Mean Chey	96%	97%	94%	64%	65%	63%
Dang Tong	87%	94%	81%	82%	81%	84%
Stueng Veang	82%	85%	80%	49%	61%	41%
District: Mondol Seima	80%	85%	76%	51%	66%	38%
Bak Khlang	83%	87%	80%	52%	68%	39%
Peam Krasaob	79%	88%	70%	88%	75%	100%
Tuol Kokir	44%	53%	36%	28%	50%	0%
District: Srae Ambel	60%	61%	59%	49%	61%	34%
Boeng Preav	73%	77%	70%	43%	54%	37%
Chi Kha Kraom	67%	81%	53%	54%	69%	41%
Chi Kha Leu	53%	71%	35%	37%	60%	15%
Chrouy Svay	38%	42%	33%	45%	60%	23%
Dang Peang	29%	31%	26%	58%	60%	56%
Srae Ambel	73%	66%	79%	52%	63%	36%
District: Thma Bang	65%	71%	58%	27%	30%	24%
Ta Tey Leu	22%	30%	14%	0%	0%	0%
Pralay	44%	49%	41%	19%	25%	13%
Chumnoab	97%	100%	95%	63%	100%	0%
Ruessei Chrum	88%	88%	89%	46%	60%	38%
Chi Phat	67%	76%	57%	35%	35%	35%
Thmor Donpove	47%	41%	54%	30%	13%	42%
District: Kampong Seila	65%	73%	57%	40%	45%	36%
Chamkar Luong	53%	51%	55%	48%	47%	49%
Kampong Seila	57%	71%	43%	28%	28%	29%

Area	Literacy 18-64	Male Literacy 18-64	Female Literacy 18-64	Literacy >64	Male Literacy >64	Female Literacy >64
	% of age group	% of age group	% of age group	% of age group	% of age group	% of age group
Ou Bak Roteh	78%	84%	70%	51%	53%	48%
Stueng Chhay	84%	84%	84%	57%	83%	22%
MUNICIPALITY: Sihanoukville	84%	86%	82%	62%	70%	55%
District: Mittakpheap	93%	95%	92%	79%	81%	77%
Sangkat Muoy	91%	94%	88%	46%	53%	42%
Sangkat Pir	100%	100%	100%	83%	83%	83%
Sangkat Bei	94%	96%	92%	75%	73%	76%
Sangkat Buon	97%	97%	96%	86%	89%	83%
Kaoh Rung	29%	41%	16%	13%	14%	12%
District: Prey Nob	75%	78%	73%	53%	65%	42%
Andoung Thma	69%	72%	66%	62%	66%	58%
Boeng Ta Prum	59%	54%	63%	34%	49%	21%
Bet Trang	81%	82%	80%	57%	71%	43%
Cheung Kou	75%	75%	75%	47%	56%	37%
Ou Chrov	64%	67%	62%	44%	45%	43%
Ou Oknha Heng	82%	86%	78%	70%	82%	58%
Prey Nob	89%	92%	87%	69%	73%	66%
Ream	89%	91%	87%	54%	73%	44%
Sameakki	65%	77%	54%	66%	66%	67%
Samrong	77%	84%	69%	58%	70%	41%
Tuek L'ak	85%	85%	84%	66%	72%	57%
Tuek Thla	58%	57%	59%	13%	21%	8%
Tuol Toetueng	39%	46%	30%	39%	40%	38%
Veal Renh	86%	92%	80%	44%	82%	21%
District: Stueng Hav	79%	82%	76%	44%	53%	36%
Kampenh	85%	92%	79%	76%	95%	57%
Ou Treh	85%	89%	82%	78%	84%	74%
Tumnob Rolok	75%	77%	72%	31%	40%	25%
MUNICIPALITY: Kep	91%	91%	90%	52%	55%	50%
District: Damnak Chang'aeur	90%	91%	89%	50%	52%	49%
Angkaol	84%	86%	83%	31%	51%	15%
Ou Krasar	89%	91%	88%	40%	39%	41%
Pong Tuek	95%	96%	94%	74%	65%	79%
District: Kaeb	91%	91%	91%	56%	60%	53%
Kaeb	88%	88%	88%	47%	41%	52%
Prey Thum	93%	94%	93%	62%	72%	53%

Source: Commune Database 2003.

Table 49: Education Table III by Coastal Zone, Provinces and Municipalities, Districts and Communes. School Attendance between 5 and 14 Years of Age, Overall, Male and Female (2003). School Attendance between 15 and 17 Years of Age, Overall, Male and Female (2003).

តារាងទី ៤៩: ការអប់រំតាមតំបន់ឆ្នេរ ខេត្ត ក្រុង ស្រុក និងឃុំភូមិតំបន់ឆ្នេរ។ វត្តមាននៅក្នុងសាលារៀនរបស់ សិស្សអាយុពី ៥ ទៅ ១៤ ឆ្នាំ ភាគរយសរុប ភាគរយសិស្សប្រុស និងស្រី (២០០៣) ។ វត្តមាននៅក្នុងសាលារៀនរបស់សិស្សអាយុពី ១៥ ទៅ ១៧ ឆ្នាំ ភាគរយសរុប ភាគរយសិស្សប្រុស និងស្រី (២០០៣)

Area	Overall School Attendance 5-14 % of age group	Male School Attendance 5-14 % of age group	Female School Attendance 5-14 % of age group	Overall School Attendance 15-17 % of age group	Male School Attendance 15-17 % of age group	Female School Attendance 15-17 % of age group
COASTAL ZONE	81%	82%	81%	62%	64%	61%
PROVINCE: Kampot	85%	86%	84%	67%	69%	64%
District: Angkor Chev	92%	92%	92%	81%	83%	80%
Angk Phnum Touch	88%	90%	86%	68%	81%	55%
Angkor Chev	96%	97%	95%	91%	96%	86%
Champeï	83%	81%	84%	67%	74%	60%
Dambouk Khpos	91%	91%	90%	78%	78%	78%
Dan Koum	100%	100%	99%	86%	81%	91%
Daeum Doung	91%	88%	94%	74%	74%	73%
Mroum	93%	93%	93%	78%	82%	73%
Phnum Kong	92%	94%	90%	93%	93%	93%
Praphnum	98%	98%	98%	78%	81%	76%
Samlanh	97%	97%	97%	89%	85%	92%
Tani	93%	91%	95%	83%	84%	82%
District: Banteay Meas	87%	88%	86%	72%	72%	72%
Banteay Meas Khang Kaeut	91%	92%	89%	78%	81%	75%
Banteay Meas Khang Lech	91%	91%	90%	84%	85%	83%
Prey Tonle	86%	79%	92%	48%	41%	59%
Samraong Kraom	91%	91%	91%	72%	72%	72%
Samraong Leu	71%	66%	76%	69%	68%	70%
Sdach Kong Khang Cheung	93%	92%	95%	53%	61%	46%
Sdach Kong Khang Lech	81%	79%	84%	63%	64%	62%
Sdach Kong Khang Tbound	95%	93%	98%	73%	67%	81%
Tnaot Chong Srang	69%	70%	68%	57%	56%	58%
Trapeang Sala Khang Kaeut	91%	94%	87%	63%	70%	57%
Trapeang Sala Khang Lech	86%	91%	81%	79%	80%	78%
Tuk Meas Khang Kaeut	93%	96%	90%	80%	73%	87%
Tuk Meas Khang Lech	89%	94%	83%	80%	76%	85%
Voat Angk Khang Cheung	91%	92%	89%	91%	89%	93%
Voat Angk Khang Tbound	98%	97%	98%	70%	73%	66%
District: Chhuk	81%	82%	79%	59%	62%	56%
Baniev	95%	94%	96%	68%	81%	53%
Takaen	68%	67%	70%	35%	40%	28%
Boeng Nimol	72%	70%	73%	66%	67%	64%
Chhuk	75%	87%	61%	61%	60%	62%
Doun Yay	88%	93%	84%	73%	78%	68%
Krang Sbov	92%	91%	94%	78%	89%	67%
Krang Snay	78%	82%	74%	70%	74%	62%
Lbaeuk	87%	88%	87%	69%	68%	70%
Trapeang Plang	58%	55%	61%	19%	16%	24%
Mean Chey	91%	93%	89%	73%	73%	73%
Neareay	73%	72%	73%	50%	46%	53%
Satv Pong	94%	94%	94%	65%	73%	57%
Trapeang Bei	67%	68%	65%	33%	43%	24%
Tramaeng	92%	94%	90%	66%	66%	66%
District: Chum Kiri	81%	79%	82%	64%	67%	61%
Chres	71%	64%	77%	68%	74%	59%
Chumpu Voan	88%	92%	84%	75%	81%	70%
Snay Anhchet	82%	79%	85%	79%	86%	72%
Srae Chaeng	81%	79%	83%	53%	56%	49%
Srae Knong	77%	83%	72%	55%	54%	57%
Srae Samraong	82%	75%	89%	72%	74%	71%
Trapeang Reang	80%	75%	85%	54%	54%	55%
District: Dang Tong	85%	87%	84%	71%	75%	67%
Damnak Sokram	94%	95%	92%	94%	98%	91%
Dang Tong	88%	89%	87%	80%	80%	79%
Khcheay Khang Cheung	91%	95%	88%	73%	78%	69%
Khcheay Khang Tbound	77%	72%	82%	58%	72%	43%
Mean Ritth	88%	89%	88%	61%	71%	51%
Srae Chea Khang Cheung	93%	92%	93%	87%	83%	91%
Srae Chea Khang Tbound	90%	78%	100%	90%	96%	85%
Totung	96%	98%	94%	89%	92%	85%
Angkor Meas	82%	89%	74%	62%	63%	61%
L'ang	57%	62%	52%	50%	57%	43%
District: Kampong Trach	84%	85%	84%	65%	70%	60%

Area	Overall School Attendance 5-14	Male School Attendance 5-14	Female School Attendance 5-14	Overall School Attendance 15-17	Male School Attendance 15-17	Female School Attendance 15-17
	% of age group	% of age group	% of age group	% of age group	% of age group	% of age group
Boeng Sala Khang Cheung	68%	65%	71%	74%	70%	79%
Boeng Sala Khang Tbound	83%	87%	80%	49%	62%	38%
Damnak Kantuot Khang Cheung	91%	84%	98%	63%	70%	56%
Damnak Kantuot Khang Tbound	88%	92%	84%	77%	79%	74%
Kampong Trach Khang Kaeut	85%	86%	83%	71%	88%	55%
Kampong Trach Khang Lech	97%	97%	96%	90%	90%	90%
Kanthaor Khang Cheung	69%	45%	90%	55%	75%	40%
Kanthaor Khang kaeut	82%	78%	86%	44%	50%	39%
Kanthaor Khang Lech	87%	91%	84%	87%	83%	93%
Preaek Kroes	89%	91%	86%	65%	69%	61%
Ruessei srok Khang Kaeut	100%	100%	100%	96%	95%	98%
Ruessei Srok Khang Lech	79%	80%	76%	52%	56%	47%
Svay Tong Khang Cheung	96%	97%	94%	82%	83%	82%
Svay Tong Khang Tbound	67%	77%	57%	35%	38%	32%
District: Kampot	82%	84%	80%	55%	57%	52%
Boeng Tuk	80%	85%	74%	30%	29%	32%
Chum Kriel	100%	100%	99%	74%	82%	68%
Kampong Kraeng	93%	95%	92%	84%	87%	81%
Kampong Samraong	87%	90%	83%	66%	75%	57%
Kandal	88%	91%	85%	40%	42%	39%
Kaoh Touch	77%	80%	74%	55%	60%	51%
Koun Satv	65%	71%	61%	52%	66%	41%
Meakprang	85%	86%	83%	66%	69%	64%
Preaek Tnaot	83%	77%	89%	47%	41%	53%
Prey Khmum	79%	76%	82%	62%	66%	57%
Prey Thnang	85%	85%	84%	66%	71%	62%
Stueng Kaev	64%	72%	55%	17%	17%	17%
Thmei	74%	69%	80%	41%	37%	46%
Trapeang Pring	79%	91%	68%	24%	25%	22%
Trapeang sangkae	86%	94%	79%	54%	52%	56%
Trapeang Thum	100%	100%	100%	95%	100%	89%
District: Kampong Bay	92%	93%	92%	75%	80%	70%
Kampong Kandal	100%	100%	100%	88%	90%	85%
Krang Ampil	70%	74%	68%	51%	79%	39%
Kampong Bay	100%	100%	100%	99%	99%	99%
Andoung Khmaer	95%	94%	96%	69%	70%	69%
Traeuy Kaoh	86%	84%	88%	53%	54%	52%
PROVINCE: Koh Kong	66%	66%	67%	41%	42%	39%
District: Botum Sakor	59%	59%	59%	17%	18%	17%
Andoung Tuek	54%	51%	58%	21%	25%	17%
Kandaol	57%	63%	51%	70%	71%	69%
Ta Nun	78%	72%	84%	22%	4%	43%
Thma Sa	59%	60%	58%	3%	3%	2%
District: Kiri Sakor	61%	48%	70%	17%	18%	15%
Kaoh Sdach	83%	73%	88%	17%	19%	14%
Phnhi Meas	86%	89%	83%	55%	63%	50%
Preaek Khsach	21%	9%	32%	0%	0%	0%
District: Kaoh Kong	78%	79%	78%	15%	16%	14%
Chrouy Pras	85%	94%	78%	0%	0%	0%
Kaoh Kapi	81%	82%	80%	7%	7%	7%
Ta Tai Kraom	68%	64%	71%	61%	63%	59%
Trapeang Rung	70%	61%	79%	28%	32%	23%
District: Smach Mean Chey	68%	67%	69%	56%	51%	64%
Smach Mean Chey	66%	68%	63%	60%	58%	64%
Dang Tong	73%	68%	78%	51%	41%	69%
Stueng Veang	52%	57%	47%	41%	34%	51%
District: Mondol Seima	74%	73%	75%	35%	43%	28%
Bak Khlang	75%	74%	76%	37%	46%	30%
Peam Krasaob	65%	64%	66%	15%	0%	25%
Tuol Kokir	74%	78%	69%	3%	6%	0%
District: Srae Ambel	65%	65%	64%	44%	52%	37%
Boeng Preav	58%	59%	57%	64%	68%	59%
Chi Kha Kraom	73%	71%	75%	49%	58%	41%
Chi Kha Leu	82%	80%	85%	33%	35%	31%
Chrouy Svay	62%	67%	58%	9%	19%	3%
Dang Peang	55%	54%	55%	54%	50%	58%
Srae Ambel	66%	66%	66%	49%	62%	39%
District: Thma Bang	58%	64%	51%	32%	32%	33%
Ta Tey Leu	97%	98%	95%	0%	0%	0%
Pralay	73%	76%	69%	59%	79%	45%
Chumnoab	75%	62%	85%	31%	25%	38%
Ruessei Chrum	39%	41%	38%	25%	22%	27%
Chi Phat	51%	62%	40%	31%	32%	31%
Thmor Donpove	86%	81%	92%	58%	42%	86%
District: Kampong Seila	71%	70%	73%	44%	50%	39%
Chamkar Luong	76%	68%	86%	78%	78%	78%
Kampong Seila	75%	76%	73%	62%	68%	56%

Area	Overall School Attendance 5-14	Male School Attendance 5-14	Female School Attendance 5-14	Overall School Attendance 15-17	Male School Attendance 15-17	Female School Attendance 15-17
	% of age group	% of age group	% of age group	% of age group	% of age group	% of age group
Ou Bak Roteh	68%	64%	74%	16%	19%	14%
Stueng Chhay	59%	67%	51%	39%	46%	31%
MUNICIPALITY: Sihanoukville	80%	80%	80%	66%	67%	65%
District: Mittakpheap	89%	87%	92%	83%	81%	86%
Sangkat Muoy	86%	82%	91%	29%	31%	28%
Sangkat Pir	97%	97%	97%	98%	98%	99%
Sangkat Bei	91%	90%	93%	94%	94%	95%
Sangkat Buon	90%	86%	95%	89%	84%	93%
Kaoh Rung	46%	61%	37%	9%	6%	12%
District: Prey Nob	72%	73%	71%	51%	54%	47%
Andoung Thma	71%	75%	67%	68%	77%	59%
Boeng Ta Prum	57%	52%	62%	40%	39%	41%
Bet Trang	76%	75%	76%	67%	72%	61%
Cheung Kou	71%	75%	67%	16%	20%	13%
Ou Chrov	63%	65%	61%	35%	36%	34%
Ou Oknha Heng	89%	91%	87%	70%	77%	64%
Prey Nob	88%	88%	87%	57%	81%	37%
Ream	60%	57%	63%	60%	62%	58%
Sameakki	63%	62%	63%	55%	56%	54%
Samrong	73%	72%	75%	37%	35%	39%
Tuek L'ak	63%	65%	62%	70%	77%	65%
Tuek Thla	83%	82%	85%	40%	39%	42%
Tuol Toetueng	79%	76%	81%	66%	63%	68%
Veal Renh	79%	90%	66%	64%	64%	64%
District: Stueng Hav	87%	86%	87%	59%	63%	55%
Kamphenh	98%	97%	99%	76%	76%	76%
Ou Treh	74%	76%	72%	50%	58%	43%
Tumnob Rolok	89%	88%	90%	59%	62%	56%
MUNICIPALITY: Kep	85%	84%	85%	60%	61%	59%
District: Damnak Chang'aeur	83%	83%	84%	55%	55%	54%
Angkaol	76%	74%	78%	23%	24%	22%
Ou Krasar	80%	81%	79%	60%	61%	59%
Pong Tuek	92%	91%	92%	82%	84%	80%
District: Kaeb	88%	88%	88%	74%	76%	72%
Kaeb	89%	88%	89%	76%	77%	76%
Prey Thum	88%	89%	87%	72%	75%	69%

Source: Commune Database 2003.

Table 50: Education Table IV by Coastal Zone, Provinces and Municipalities, Districts and Communes. Number of Schools, Overall, With Drinking Water and With Toilets (2003). Number of Buildings, Classrooms, Shifts and Classes (2003). Student to Classroom Ratio (2003). Children between 5 and 14 Years of Age to Classroom Ratio (2003).

តារាងទី ៥០: ការអប់រំតាមតំបន់ឆ្នេរ ខេត្ត ក្រុង ស្រុក និងឃុំភ្នំតំបន់ឆ្នេរ។ ចំនួនសាលារៀន ចំនួនសរុប ចំនួនមានទឹកស្អាតប្រើ និងមានបង្គន់អនាម័យ (២០០៣)។ ចំនួនអាគារ បន្ទប់រៀន បន្ទប់ទឹក និងថ្នាក់ (២០០៣)។ ចំនួនសិស្សរៀនសូត្រ និង អត្រាបន្ទប់រៀន (២០០៣)។ ចំនួនកុមារអាយុចន្លោះ ៥ ទៅ ១៤ឆ្នាំរៀនសូត្រអត្រាបន្ទប់រៀន (២០០៣)។

Area	# Schools	# With Water	# With Toilets	# Buildings	Class-rooms	#Shift	Classes	Students/ Classroom	Children/ Classroom
	#	#	#	#	#	#	#	#	# 5,14 in pop
COASTAL ZONE	439	189	283	842	2768	839	4488	73	76
PROVINCE: Kampot	274	137	200	567	1855	522	2907	71	72
District: Angkor Chev	42	24	34	91	281	71	403	62	64
Angk Phnum Touch	2	2	1	6	15	3	24	65	74
Angkor Chev	2	1	2	7	21	4	29	55	46
Champeï	6	3	4	12	34	10	46	60	71
Dambouk Khpos	6	3	5	12	40	10	68	78	83
Dan Koum	4	2	4	8	20	7	29	63	61
Daeum Doung	1	0	1	2	9	2	13	62	72
Mroum	3	2	3	9	26	5	32	55	39
Phnum Kong	7	5	3	10	36	11	43	47	66
Praphnum	2	1	2	7	15	3	19	57	74
Samlanh	4	2	4	9	31	7	45	64	48
Tani	5	3	5	9	34	9	55	68	66
District: Banteay Meas	44	21	29	95	297	77	434	63	62
Banteay Meas Khang Kaeut	4	1	3	10	32	7	38	51	48
Banteay Meas Khang Lech	4	3	2	8	23	5	25	44	65
Prey Tonle	3	2	2	4	12	6	25	86	51
Samraong Kraom	3	1	2	7	24	4	26	46	52
Samraong Leu	3	3	2	6	21	6	34	63	63
Sdach Kong Khang Cheung	4	0	3	9	23	7	39	84	44
Sdach Kong Khang Lech	2	1	2	6	14	4	23	68	70
Sdach Kong Khang Tbound	1	0	0	3	6	2	13	116	116
Tnaot Chong Srang	3	0	0	4	16	6	34	94	112
Trapeang Sala Khang Kaeut	2	0	1	4	14	2	15	46	62
Trapeang Sala Khang Lech	3	2	1	5	17	6	28	65	67
Tuk Meas Khang Kaeut	4	2	3	8	24	8	33	54	46
Tuk Meas Khang Lech	2	2	2	7	23	4	32	65	76
Voat Angk Khang Cheung	3	3	3	7	27	5	36	65	57
Voat Angk Khang Tbound	3	1	3	7	21	5	33	65	64
District: Chhuk	37	20	26	76	265	74	431	77	81
Baniev	2	1	2	6	22	4	28	67	63
Takaen	4	2	2	7	32	8	43	62	62
Boeng Nimol	3	2	3	9	22	6	41	85	58
Chhuk	2	2	2	4	18	4	24	68	100
Doun Yay	4	3	3	7	23	8	36	72	60
Krang Sbov	2	1	1	6	21	4	40	95	67
Krang Snay	3	1	2	4	16	6	31	94	163
Lbaeuk	2	1	2	4	14	4	22	64	135
Trapeang Plang	2	1	2	6	23	4	31	67	52
Mean Chey	3	1	2	8	22	6	41	89	44
Neareay	2	1	2	5	14	4	22	75	102
Satv Pong	3	3	3	5	16	6	27	82	106
Trapeang Bei	2	0	0	2	11	4	22	90	91
Tramaeng	3	1	0	3	11	6	23	95	142
District: Chum Kiri	23	12	15	47	158	48	261	73	69
Chres	3	0	1	5	14	7	28	90	104
Chumpu Voan	4	3	3	9	29	8	46	69	67
Snay Anhchet	3	2	2	6	19	6	34	78	69
Srae Chaeng	6	2	3	10	32	13	60	81	70
Srae Knong	1	0	1	2	8	2	13	93	150
Srae Samraong	3	3	3	8	32	6	39	52	26
Trapeang Reang	3	2	2	7	24	6	41	76	81
District: Dang Tong	25	8	16	49	161	50	278	86	71
Damnak Sokram	2	1	1	4	11	4	20	81	67
Dang Tong	4	2	3	8	25	8	46	92	92
Khcheay Khang Cheung	2	1	1	5	14	4	26	93	87
Khcheay Khang Tbound	2	2	2	4	14	5	26	96	78
Mean Ritth	3	1	1	5	18	6	33	103	57
Srae Chea Khang Cheung	1	0	1	1	3	1	3	53	302
Srae Chea Khang Tbound	1	0	1	2	10	2	20	96	55
Totung	4	0	2	8	24	8	33	62	55
Angkor Meas	2	0	1	3	14	4	25	83	99
L'ang	4	1	3	9	28	8	46	83	36
District: Kampong Trach	41	19	33	83	266	86	454	79	75

Area	# Schools	# With Water	# With Toilets	# Buildings	Class-rooms	#Shift	Classes	Students/ Classroom	Children/ Classroom
	#	#	#	#	#	#	#	#	# 5,14 in pop
Boeng Sala Khang Cheung	4	3	4	11	34	9	52	72	55
Boeng Sala Khang Tboung	3	1	2	5	14	6	27	82	109
Damnak Kantuot Khang Cheung	3	3	3	7	20	6	38	93	63
Damnak Kantuot Khang Tboung	5	4	5	11	34	10	49	67	55
Kampong Trach Khang Kaeut	4	1	4	6	25	9	45	79	93
Kampong Trach Khang Lech	2	1	1	3	13	5	22	77	101
Kanthaor Khang Cheung	1	0	0	2	8	2	15	87	72
Kanthaor Khang kaeut	1	1	1	2	6	2	11	78	179
Kanthaor Khang Lech	2	1	2	4	14	4	33	103	78
Preaek Kroes	5	2	5	11	32	11	54	80	73
Ruessei srok Khang Kaeut	3	1	2	6	16	6	25	59	68
Ruessei Srok Khang Lech	5	0	4	9	35	9	52	75	51
Svay Tong Khang Cheung	1	0	0	2	6	3	15	125	120
Svay Tong Khang Tboung	2	1	0	4	9	4	16	75	112
District: Kampot	50	24	37	95	317	94	487	69	75
Boeng Tuk	3	2	2	6	17	5	21	49	65
Chum Kriel	2	1	2	6	14	3	21	69	59
Kampong Kraeng	4	1	3	6	19	8	33	81	79
Kampong Samraong	1	0	1	1	8	2	15	81	79
Kandal	4	3	4	13	38	8	58	71	84
Kaoh Touch	4	1	1	6	21	6	30	67	64
Koun Satv	5	5	4	8	30	9	41	61	65
Meakprang	2	0	2	5	12	4	22	87	81
Preaek Tnaot	3	1	3	7	23	6	34	70	90
Prey Khmum	3	1	3	7	28	6	35	57	56
Prey Thnang	4	3	3	7	30	8	51	74	75
Stueng Kaev	2	1	1	3	9	4	17	78	131
Thmei	6	3	3	10	28	12	45	68	59
Trapeang Pring	3	1	2	5	19	5	25	59	71
Trapeang sangkae	3	1	2	4	17	6	33	84	84
Trapeang Thum	1	0	1	1	4	2	6	51	184
District: Kampong Bay	12	9	10	31	110	22	159	61	80
Kampong Kandal	4	3	3	9	33	6	49	59	69
Krang Ampil	2	1	1	4	11	4	15	57	104
Kampong Bay	1	1	1	6	23	1	23	41	63
Andoung Khmaer	3	3	3	8	26	6	43	72	96
Traeuy Kaoh	2	1	2	4	17	5	29	75	87
PROVINCE: Koh Kong	93	19	34	122	369	172	629	72	86
District: Botum Sakor	11	2	3	17	46	21	71	72	106
Andoung Tuek	3	1	1	7	16	5	23	64	86
Kandaol	3	0	1	4	9	5	13	62	73
Ta Nun	1	0	0	1	5	2	7	51	56
Thma Sa	4	1	1	5	16	9	28	92	159
District: Kiri Sakor	6	0	0	7	17	11	33	68	73
Kaoh Sdach	3	0	0	4	12	5	21	66	55
Phnhi Meas	1	0	0	1	1	2	3	98	130
Preaek Khsach	2	0	0	2	4	4	9	69	113
District: Kaoh Kong	7	1	4	8	23	14	41	63	74
Chrouy Pras	1	0	1	2	6	2	10	70	77
Kaoh Kapi	3	0	1	3	9	6	18	74	79
Ta Tai Kraom	1	0	0	1	2	2	6	75	120
Trapeang Rung	2	1	2	2	6	4	7	36	46
District: Smach Mean Chey	6	5	6	14	65	12	107	80	112
Smach Mean Chey	4	4	4	10	50	8	78	77	61
Dang Tong	1	1	1	3	12	2	24	107	299
Stueng Veaeng	1	0	1	1	3	2	5	25	211
District: Mondol Seima	10	0	1	12	39	19	72	63	69
Bak Khlang	5	0	1	7	29	10	52	74	81
Peam Krasaob	2	0	0	2	4	4	9	38	32
Tuol Kokir	3	0	0	3	6	5	11	29	32
District: Srae Ambel	36	3	12	44	111	64	196	78	83
Boeng Preav	5	0	3	6	18	9	27	69	97
Chi Kha Kraom	6	0	2	6	14	12	24	62	58
Chi Kha Leu	5	0	0	4	9	7	14	70	92
Chrouy Svay	8	3	2	8	19	14	32	64	69
Dang Peaeng	6	0	1	6	14	9	21	73	83
Srae Ambel	6	0	4	14	37	13	78	99	90
District: Thma Bang	6	1	0	7	12	9	22	69	94
Ta Tey Leu	1	1	0	2	5	3	11	85	17
Pralay	1	0	0	1	1	1	2	78	90
Chumnoab	1	0	0	1	2	2	3	52	32
Ruessei Chrum	1	0	0	1	1	1	2	74	157
Chi Phat	1	0	0	1	2	1	2	38	339
Thmor Donpove	1	0	0	1	1	1	2	70	57
District: Kampong Seila	11	7	8	13	56	22	87	63	64
Chamkar Luong	3	2	2	3	14	6	22	64	50
Kampong Seila	3	2	2	4	19	6	27	64	81

Area	# Schools	# With Water	# With Toilets	# Buildings	Class-rooms	#Shift	Classes	Students/Classroom	Children/Classroom
	#	#	#	#	#	#	#	#	# 5,14 in pop
Ou Bak Roteh	3	2	2	4	13	6	21	62	70
Stueng Chhay	2	1	2	2	10	4	17	59	45
MUNICIPALITY: Sihanoukville	52	26	35	117	436	106	769	83	87
District: Mittakpheap	15	9	10	39	176	31	319	84	83
Sangkat Muoy	3	1	2	10	41	6	66	83	99
Sangkat Pir	2	2	2	9	52	4	102	90	41
Sangkat Bei	4	4	4	10	41	8	73	81	97
Sangkat Buon	3	2	2	7	35	7	66	90	115
Kaoh Rung	3	0	0	3	7	6	12	35	64
District: Prey Nob	34	16	23	66	218	69	399	86	93
Andoung Thma	1	1	1	3	11	2	21	94	112
Boeng Ta Prum	1	1	1	3	15	2	33	110	102
Bet Trang	1	0	0	2	6	2	14	125	135
Cheung Kou	7	2	4	12	41	12	52	54	63
Ou Chrov	2	1	1	3	10	6	23	104	152
Ou Oknha Heng	2	1	1	4	15	4	25	82	123
Prey Nob	4	3	3	6	20	8	42	102	72
Ream	2	1	2	6	18	5	39	108	131
Sameakki	2	2	2	3	9	4	16	74	89
Samrong	3	0	2	5	17	6	42	111	96
Tuek L'ak	2	1	1	4	12	4	21	77	79
Tuek Thla	4	2	3	7	15	8	23	61	77
Tuol Toetueung	2	1	1	4	11	4	17	75	80
Veal Renh	1	0	1	4	18	2	31	88	87
District: Stueng Hav	3	1	2	12	42	6	51	59	72
Kampenh	1	1	1	3	9	2	10	45	46
Ou Treh	1	0	0	2	7	2	10	73	107
Tumnob Rolok	1	0	1	7	26	2	31	60	72
MUNICIPALITY: Kep	20	7	14	36	108	39	183	69	84
District: Damnak Chang'aeur	14	4	9	22	68	27	117	72	89
Angkaol	3	1	2	4	17	6	31	78	112
Ou Krasar	6	2	3	10	30	12	52	75	63
Pong Tuek	5	1	4	8	21	9	34	61	109
District: Kaeb	6	3	5	14	40	12	66	66	75
Kaeb	2	0	1	6	16	4	23	58	70
Prey Thum	4	3	4	8	24	8	43	71	78

Source: Department of Planning, Ministry of Education, Youth and Sport (2004)

Table 51: Education Table V by Coastal Zone, Provinces and Municipalities, Districts and Communes. Number of Teachers (2003). Number of Female Teachers (2003). Number of Grade 1,6 Students (2003). Number of Female Grade 1,6 Students (2003). Student to Teacher Ratio (2003). Children between 5 and 14 Years of Age to Teacher Ration (2003).

តារាងទី ៥១: ការអប់រំតាមតំបន់ឆ្នេរ ខេត្ត ក្រុង ស្រុក និងឃុំក្នុងតំបន់ឆ្នេរ។ ចំនួនគ្រូ (២០០៣) ចំនួនគ្រូស្រី (២០០៣) ចំនួនសិស្សថ្នាក់ទី១ ទី៦ (២០០៣) អត្រាសិស្សធៀបតំបន់ (២០០៣) កុមារអាយុចន្លោះពី ៥ ទៅ ១៤ ឆ្នាំធៀបតំបន់អត្រាគ្រូ (២០០៣)

Area	Teachers #	Females Teachers #	Students #	Female Students #	Students/ Teacher #	Children/ Teacher # 5-14 in pop
COASTAL ZONE	3794	1412	201509	93524	53	56
PROVINCE: Kampot	2594	989	131457	60781	51	51
District: Angkor Chey	408	189	17409	8129	43	44
Angk Phnum Touch	24	11	978	431	41	46
Angkor Chey	30	15	1161	530	39	32
Champey	46	13	2055	1006	45	52
Dambouk Khpos	69	27	3114	1466	45	48
Dan Koum	29	15	1254	571	43	42
Daum Doung	13	6	555	300	43	50
Mroum	33	15	1442	650	44	30
Phnum Kong	43	21	1677	764	39	55
Praphnum	19	9	858	401	45	59
Samlanh	45	23	1993	945	44	33
Tani	57	34	2322	1065	41	40
District: Banteay Meas	401	138	18828	8490	47	46
Banteay Meas Khang Kaeut	40	13	1623	707	41	39
Banteay Meas Khang Lech	28	11	1001	478	36	54
Prey Tonle	20	8	1034	446	52	31
Samraong Kraom	28	11	1108	494	40	45
Samraong Leu	37	21	1325	593	36	36
Sdach Kong Khang Cheung	24	9	1934	847	81	42
Sdach Kong Khang Lech	17	4	956	466	56	58
Sdach Kong Khang Tboundg	7	0	695	297	99	99
Tnaot Chong Srang	26	5	1507	609	58	69
Trapeang Sala Khang Kaeut	14	3	646	277	46	62
Trapeang Sala Khang Lech	32	15	1111	526	35	36
Tuk Meas Khang Kaeut	30	7	1287	599	43	37
Tuk Meas Khang Lech	32	14	1495	700	47	55
Voat Angk Khang Cheung	33	9	1745	827	53	47
Voat Angk Khang Tboundg	33	8	1361	624	41	41
District: Chhuk	406	131	20462	9594	50	53
Baniev	24	9	1484	703	62	58
Takaen	45	14	1974	915	44	44
Boeng Nimol	40	24	1864	867	47	32
Chhuk	23	10	1225	606	53	78
Doun Yay	38	6	1646	773	43	36
Krang Sbov	38	18	1991	931	52	37
Krang Snay	25	3	1504	668	60	104
Lbaeuk	22	3	895	441	41	86
Trapeang Plang	29	9	1532	741	53	41
Mean Chey	42	15	1958	943	47	23
Neareay	18	7	1049	483	58	79
Satv Pong	27	9	1306	650	48	63
Trapeang Bei	17	2	991	394	58	59
Tramaeng	18	2	1043	479	58	87
District: Chum Kiri	216	58	11596	5411	54	51
Chres	24	5	1262	563	53	61
Chumpu Voan	41	13	2007	929	49	47
Snay Anhchet	35	13	1489	731	43	37
Srae Chaeng	41	10	2607	1186	64	55
Srae Knong	10	2	744	366	74	120
Srae Samraong	30	7	1657	747	55	28
Trapeang Reang	35	8	1830	889	52	55
District: Dang Tong	197	52	13789	6286	70	58
Damnak Sokram	11	1	894	443	81	67
Dang Tong	43	12	2302	1046	54	53
Khcheay Khang Cheung	15	4	1305	598	87	81
Khcheay Khang Tboundg	18	7	1342	586	75	61
Mean Ritth	18	4	1857	857	103	57
Srae Chea Khang Cheung	3	0	159	80	53	302
Srae Chea Khang Tboundg	13	2	963	438	74	42
Totung	27	9	1492	701	55	48
Angkor Meas	17	5	1165	516	69	81
L'ang	32	8	2310	1021	72	32
District: Kampong Trach	377	96	20915	9505	55	53
Boeng Sala Khang Cheung	53	13	2457	1151	46	35

Area	Teachers	Females Teachers	Students	Female Students	Students/Teacher	Children/Teacher
	#	#	#	#	#	# 5-14 in pop
Boeng Sala Khang Tbound	15	1	1151	524	77	101
Damnak Kantuot Khang Cheung	25	5	1856	850	74	50
Damnak Kantuot Khang Tbound	44	14	2288	1069	52	42
Kampong Trach Khang Kaeut	40	20	1972	908	49	58
Kampong Trach Khang Lech	17	2	998	448	59	78
Kanthaor Khang Cheung	12	3	699	345	58	48
Kanthaor Khang kaeut	7	3	465	201	66	153
Kanthaor Khang Lech	30	14	1446	664	48	36
Preaek Kroes	40	7	2574	1159	64	59
Ruessei srok Khang Kaeut	23	3	951	391	41	47
Ruessei Srok Khang Lech	49	10	2635	1209	54	36
Svay Tong Khang Cheung	11	1	752	332	68	66
Svay Tong Khang Tbound	11	0	671	254	61	92
District: Kampot	421	216	21788	10249	52	56
Boeng Tuk	21	10	839	399	40	52
Chum Kriel	21	18	972	451	46	39
Kampong Kraeng	33	14	1540	728	47	45
Kampong Samraong	15	11	646	301	43	42
Kandal	36	17	2714	1290	75	89
Kaoh Touch	26	16	1410	660	54	52
Koun Satv	36	10	1840	882	51	54
Meakprang	21	7	1046	492	50	46
Preaek Tnaot	25	4	1621	781	65	83
Prey Khmum	38	23	1596	775	42	41
Prey Thnang	38	18	2217	1002	58	59
Stueng Kaev	10	0	701	297	70	118
Thmei	38	24	1893	888	50	44
Trapeang Pring	22	11	1127	522	51	61
Trapeang sangkae	34	27	1424	701	42	42
Trapeang Thum	7	6	202	80	29	105
District: Kampong Bay	168	109	6670	3117	40	53
Kampong Kandal	50	32	1943	921	39	45
Krang Ampil	18	13	624	313	35	63
Kampong Bay	23	20	949	444	41	63
Andoung Khmaer	46	30	1874	854	41	54
Traeuy Kaoh	31	14	1280	585	41	48
PROVINCE: Koh Kong	367	92	26551	12295	72	86
District: Botum Sakor	35	7	3300	1567	94	139
Andoung Tuek	10	3	1020	478	102	137
Kandaol	7	1	558	257	80	94
Ta Nun	3	0	257	123	86	94
Thma Sa	15	3	1465	709	98	170
District: Kiri Sakor	15	2	1160	548	77	83
Kaoh Sdach	13	2	786	385	60	51
Phnhi Meas	0	0	98	32	NA	NA
Preaek Khsach	2	0	276	131	138	226
District: Kaoh Kong	20	1	1450	665	73	85
Chrouy Pras	5	1	419	182	84	92
Kaoh Kapi	8	0	664	307	83	89
Ta Tai Kraom	3	0	149	79	50	80
Trapeang Rung	4	0	218	97	55	70
District: Smach Mean Chey	94	36	5185	2508	55	77
Smach Mean Chey	74	32	3829	1814	52	41
Dang Tong	17	3	1280	662	75	211
Stueng Veaeng	3	1	76	32	25	211
District: Mondol Seima	37	8	2465	1133	67	72
Bak Khlang	30	8	2140	974	71	79
Peam Krasaob	3	0	153	70	51	42
Tuol Kokir	4	0	172	89	43	48
District: Srae Ambel	116	31	8654	3904	75	79
Boeng Preav	15	6	1236	551	82	117
Chi Kha Kraom	10	2	871	391	87	81
Chi Kha Leu	5	0	628	279	126	165
Chrouy Svay	13	1	1217	539	94	100
Dang Peaeng	9	1	1022	481	114	129
Srae Ambel	64	21	3680	1663	58	52
District: Thma Bang	7	0	823	359	118	162
Ta Tey Leu	5	0	423	169	85	17
Pralay	0	0	78	36	NA	NA
Chumnoab	2	0	103	41	52	32
Ruessei Chrum	0	0	74	42	NA	NA
Chi Phat	0	0	75	38	NA	NA
Thmor Donpove	0	0	70	33	NA	NA
District: Kampong Seila	43	7	3514	1611	82	84
Chamkar Luong	10	1	901	389	90	70
Kampong Seila	15	4	1215	582	81	103
Ou Bak Roteh	10	1	807	364	81	92

Area	Teachers	Females Teachers	Students	Female Students	Students/Teacher	Children/Teacher
	#	#	#	#	#	# 5-14 in pop
Stueng Chhay	8	1	591	276	74	56
MUNICIPALITY: Sihanoukville	648	270	36005	16899	56	58
District: Mittakpheap	314	157	14812	6974	47	47
Sangkat Muoy	66	27	3420	1582	52	61
Sangkat Pir	102	57	4664	2297	46	21
Sangkat Bei	73	40	3332	1517	46	55
Sangkat Buon	66	31	3154	1457	48	61
Kaoh Rung	7	2	242	121	35	64
District: Prey Nob	283	97	18723	8769	66	72
Andoung Thma	16	4	1036	480	65	77
Boeng Ta Prum	22	7	1646	811	75	69
Bet Trang	13	7	750	361	58	62
Cheung Kou	34	13	2215	1027	65	76
Ou Chrov	16	8	1043	476	65	95
Ou Oknha Heng	20	5	1236	594	62	92
Prey Nob	32	13	2042	969	64	45
Ream	34	12	1950	951	57	69
Sameakki	11	1	670	306	61	73
Samrong	25	6	1887	858	75	65
Tuek L'ak	9	2	927	429	103	105
Tuek Thla	13	3	918	439	71	89
Tuol Toetung	13	4	822	373	63	67
Veal Renh	25	12	1581	695	63	62
District: Stueng Hav	51	16	2470	1156	48	59
Kampenh	10	3	406	191	41	41
Ou Treh	10	1	512	223	51	75
Tumnob Rolok	31	12	1552	742	50	60
MUNICIPALITY: Kep	185	61	7496	3549	41	49
District: Damnak Chang'aeur	117	27	4874	2305	42	52
Angkaol	37	15	1333	637	36	52
Ou Krasar	50	11	2254	1033	45	38
Pong Tuek	30	1	1287	635	43	76
District: Kaeb	68	34	2622	1244	39	44
Kaeb	23	8	921	438	40	49
Prey Thum	45	26	1701	806	38	41

Sources: Department of Planning, Ministry of Education, Youth and Sport (2004).
Commune Database 2003 (Number of Children in Population between 5 and 14 Years of Age)

Table 52: Living Standards Table I by Coastal Zone, Provinces and Municipalities, Districts and Communes. Access to Water from Tube or Ring Well Year Round within 150 m (2003). Access to Piped Water (2003). Other Water Sources (2003). Households with Toilets (2003). Proportion of Households living under Thatched, Fibrocement/Zink or Tiled/Concrete Roofing (2003). Proportion of Households with Motorcycles (2003). Proportion of Households with TV (2003).

តារាងទី ៥២: កំរិតជីវភាពប្រជាជនតាមតំបន់ឆ្នេរ ខេត្ត ក្រុង ស្រុក និងឃុំក្នុងតំបន់ឆ្នេរ។ លទ្ធភាពទទួលបាន ទឹកម៉ាស៊ីន ប្រទឹកស្អាតប្រើក្នុងថ្ងៃដោយ ១៥០ម (២០០៣)។ លទ្ធភាពប្រើប្រាស់ទឹកម៉ាស៊ីន (២០០៣) ។ ចំនួនប្រភពទឹកផ្សេងៗ (២០០៣)។ ចំនួនគ្រួសារដែលមានបង្គន់អនាម័យ (២០០៣)។ អត្រាគ្រួសារដែលមានផ្ទះប្រក់ស្បូវ ហ្វីប្រូស៊ីម៉ង់ត៍/សង្ហឹម ឬប្រក់ក្បឿង /បេតុង (២០០៣)។ អត្រាគ្រួសារដែលមានម៉ូតូ (២០០៣) ។ អត្រាគ្រួសារដែលមានទូរទស្សន៍ (២០០៣) ។

Area	Access to Safe Water within 150m	Access to Piped Water	Other Water Source	Toilets	Thatched Roof	Fibro/Zink Roof	Tiled/Con,crete Roof	Families with Motos	Families with TV
	# families	# families	# families	# families	% Households	% Households	% Households	% Households	% Households
COASTAL ZONE	34647	5068	81039	23710	34%	41%	25%	18%	27%
PROVINCE: Kampot	22992	0	63682	8807	36%	28%	36%	17%	25%
District: Angkor Chey	2934	0	8642	871	28%	15%	57%	19%	31%
Angk Phnum Touch	293	0	316	45	18%	9%	73%	22%	35%
Angkor Chey	319	0	293	25	41%	9%	50%	21%	24%
Champey	382	0	952	45	44%	13%	43%	19%	35%
Dambouk Khpos	503	0	2138	35	32%	17%	52%	12%	27%
Dan Koum	75	0	932	27	23%	17%	60%	16%	25%
Daeum Doung	125	0	329	24	10%	14%	76%	18%	36%
Mroum	120	0	696	36	32%	14%	54%	19%	23%
Phnum Kong	261	0	1245	213	24%	18%	59%	25%	30%
Praphnum	240	0	225	55	24%	11%	66%	26%	37%
Samlanh	117	0	790	83	23%	14%	62%	25%	35%
Tani	499	0	726	283	22%	16%	62%	22%	38%
District: Banteay Meas	3183	0	11790	1305	28%	20%	51%	11%	27%
Banteay Meas Khang Kaeut	359	0	965	92	24%	12%	64%	11%	24%
Banteay Meas Khang Lech	449	0	844	199	28%	13%	59%	12%	24%
Prey Tonle	0	0	492	51	66%	19%	15%	8%	14%
Samraong Kraom	506	0	352	37	26%	19%	55%	10%	25%
Samraong Leu	249	0	742	242	22%	27%	50%	21%	37%
Sdach Kong Khang Cheung	282	0	821	0	32%	7%	61%	8%	12%
Sdach Kong Khang Lech	115	0	612	2	38%	23%	39%	8%	27%
Sdach Kong Khang Tbound	30	0	474	1	35%	11%	54%	5%	7%
Tnaot Chong Srang	262	0	1201	1	45%	23%	32%	7%	15%
Trapeang Sala Khang Kaeut	0	0	876	33	17%	18%	65%	16%	29%
Trapeang Sala Khang Lech	184	0	685	48	23%	18%	60%	15%	30%
Tuk Meas Khang Kaeut	35	0	774	20	20%	16%	65%	10%	36%
Tuk Meas Khang Lech	336	0	1286	538	18%	40%	42%	15%	49%
Voat Angk Khang Cheung	184	0	1000	20	26%	26%	48%	11%	28%
Voat Angk Khang Tbound	192	0	666	21	32%	21%	47%	8%	22%
District: Chhuk	3887	0	10657	822	40%	25%	36%	14%	33%
Baniev	300	0	559	15	24%	24%	52%	10%	27%
Takaen	369	0	924	5	78%	21%	1%	9%	18%
Boeng Nimol	453	0	175	62	36%	27%	37%	19%	45%
Chhuk	422	0	672	180	30%	40%	30%	22%	39%
Doun Yay	217	0	515	17	29%	17%	54%	9%	33%
Krang Sbov	330	0	503	114	30%	18%	52%	10%	31%
Krang Snay	202	0	1712	174	38%	25%	37%	13%	37%
Lbaeuk	152	0	1115	0	45%	40%	14%	7%	24%
Trapeang Plang	127	0	936	1	85%	14%	1%	7%	15%
Mean Chey	232	0	508	4	29%	14%	57%	14%	34%
Neareay	298	0	661	23	35%	21%	44%	16%	39%
Satv Pong	435	0	650	220	15%	39%	46%	26%	52%
Trapeang Bei	195	0	711	3	45%	21%	35%	23%	29%
Tramaeng	155	0	1016	4	30%	12%	59%	15%	32%
District: Chum Kiri	2328	0	4158	80	46%	20%	34%	12%	26%
Chres	100	0	867	19	43%	15%	42%	5%	22%
Chumpu Voan	319	0	842	5	40%	28%	32%	9%	35%
Snay Anhchet	461	0	266	1	55%	18%	27%	14%	22%
Srae Chaeng	337	0	979	7	49%	16%	35%	20%	24%
Srae Knong	465	0	322	3	49%	17%	34%	11%	24%
Srae Samraong	244	0	344	5	40%	20%	40%	9%	26%
Trapeang Reang	402	0	538	40	47%	22%	31%	11%	28%
District: Dang Tong	3652	0	4335	252	46%	22%	32%	10%	18%
Damnak Sokram	146	0	403	5	55%	18%	28%	7%	24%
Dang Tong	522	0	1116	143	46%	21%	33%	11%	20%

Area	Access to Safe Water within 150m	Access to Piped Water	Other Water Source	Toilets	Thatched Roof	Fibro/Zink Roof	Tiled/Con,crete Roof	Families with Motos	Families with TV
	# families	# families	# families	# families	% Households	% Households	% Households	% Households	% Households
Khcheay Khang Cheung	459	0	250	2	36%	27%	37%	8%	10%
Khcheay Khang Tboung	598	0	266	16	50%	20%	30%	11%	14%
Mean Ritth	452	0	286	1	59%	10%	31%	6%	13%
Srae Chea Khang Cheung	223	0	294	1	42%	31%	28%	10%	19%
Srae Chea Khang Tboung	121	0	315	4	41%	39%	20%	13%	23%
Totung	372	0	568	5	39%	18%	42%	7%	23%
Angkor Meas	371	0	439	48	60%	17%	23%	12%	24%
L'ang	388	0	398	27	34%	27%	38%	16%	11%
District: Kampong Trach	2732	0	10864	873	38%	34%	28%	17%	16%
Boeng Sala Khang Cheung	156	0	1052	8	32%	28%	40%	11%	14%
Boeng Sala Khang Tboung	308	0	1010	1	40%	26%	34%	16%	12%
Damnak Kantuot Khang Cheung	267	0	388	65	38%	15%	47%	6%	17%
Damnak Kantuot Khang Tboung	534	0	489	118	14%	34%	52%	15%	21%
Kampong Trach Khang Kaeut	382	0	925	411	29%	55%	16%	31%	26%
Kampong Trach Khang Lech	307	0	529	23	42%	45%	13%	29%	13%
Kanthaor Khang Cheung	134	0	101	6	37%	17%	46%	7%	13%
Kanthaor Khang kaeut	198	0	769	9	37%	17%	46%	9%	13%
Kanthaor Khang Lech	154	0	665	36	54%	23%	23%	11%	25%
Preaek Kroes	40	0	1880	93	50%	29%	21%	9%	16%
Ruessei srok Khang Kaeut	60	0	605	9	39%	36%	25%	17%	16%
Ruessei Srok Khang Lech	124	0	1110	90	48%	51%	1%	37%	9%
Svay Tong Khang Cheung	0	0	610	4	39%	46%	15%	13%	12%
Svay Tong Khang Tboung	68	0	731	0	39%	20%	41%	9%	9%
District: Kampot	3263	0	11697	934	41%	43%	16%	16%	15%
Boeng Tuk	208	0	89	35	30%	66%	3%	16%	9%
Chum Kriel	200	0	726	126	14%	74%	12%	24%	20%
Kampong Kraeng	242	0	776	81	46%	41%	13%	22%	14%
Kampong Samraong	0	0	512	6	29%	58%	12%	10%	12%
Kandal	343	0	1329	13	58%	20%	21%	12%	13%
Kaoh Touch	125	0	39	30	36%	59%	5%	22%	6%
Koun Satv	107	0	1216	37	32%	36%	33%	9%	6%
Meakprang	297	0	249	228	58%	39%	3%	22%	19%
Preaek Tnaot	675	0	488	48	43%	51%	6%	13%	12%
Prey Khmum	150	0	1064	35	45%	40%	15%	16%	9%
Prey Thnang	423	0	1275	76	51%	31%	18%	20%	36%
Stueng Kaev	93	0	719	1	70%	25%	5%	6%	8%
Thmei	16	0	1237	22	43%	39%	18%	11%	16%
Trapeang Pring	0	0	1020	7	30%	35%	35%	8%	13%
Trapeang sangkae	0	0	958	65	18%	58%	25%	24%	14%
Trapeang Thum	384	0	0	124	14%	76%	10%	34%	29%
District: Kampong Bay	1013	0	1539	3670	14%	66%	19%	47%	53%
Kampong Kandal	180	0	0	1197	7%	65%	28%	64%	68%
Krang Ampil	252	0	159	669	6%	74%	20%	58%	69%
Kampong Bay	13	0	0	1109	6%	57%	37%	74%	92%
Andoung Khmaer	347	0	588	646	22%	72%	6%	27%	33%
Traeuy Kaoh	221	0	792	49	30%	61%	9%	18%	10%
PROVINCE: Koh Kong	3477	1036	10069	5071	37%	62%	2%	16%	28%
District: Botum Sakor	687	0	1454	206	40%	60%	0%	5%	33%
Andoung Tuek	69	0	897	194	36%	62%	1%	6%	18%
Kandaol	48	0	316	0	45%	55%	0%	13%	11%
Ta Nun	4	0	241	0	51%	49%	0%	0%	15%
Thma Sa	566	0	0	12	39%	61%	0%	4%	50%
District: Kiri Sakor	125	0	477	5	32%	68%	0%	6%	12%
Kaoh Sdach	106	0	57	5	19%	81%	0%	9%	15%
Phnhi Meas	4	0	138	0	64%	36%	0%	0%	4%
Preaek Khsach	15	0	282	0	51%	49%	0%	0%	7%
District: Kaoh Kong	127	0	747	42	49%	51%	0%	2%	10%
Chrouy Pras	114	0	0	7	27%	73%	0%	0%	19%
Kaoh Kapi	10	0	166	10	53%	47%	0%	0%	7%
Ta Tai Kraom	0	0	207	6	36%	64%	0%	6%	6%
Trapeang Rung	3	0	374	19	68%	32%	0%	3%	7%
District: Smach Mean Chey	511	842	655	2415	16%	81%	3%	28%	51%
Smach Mean Chey	465	0	304	1332	4%	94%	3%	34%	62%
Dang Tong	0	842	0	1025	22%	74%	4%	23%	46%
Stueng Veang	46	0	351	58	29%	71%	0%	28%	30%
District: Mondol Seima	265	0	2095	831	31%	69%	0%	10%	39%
Bak Khlang	213	0	1903	755	30%	70%	0%	11%	43%
Peam Krasaob	0	0	119	66	17%	83%	0%	0%	24%
Tuol Kokir	52	0	73	10	50%	50%	0%	2%	9%
District: Srae Ambel	908	194	2649	1412	45%	52%	3%	22%	18%
Boeng Preav	449	0	528	60	29%	65%	6%	18%	14%
Chi Kha Kraom	129	0	228	28	48%	52%	0%	8%	12%

Area	Access to Safe Water within 150m	Access to Piped Water	Other Water Source	Toilets	Thatched Roof	Fibro/Zink Roof	Tiled/Con,crete Roof	Families with Motos	Families with TV
	# families	# families	# families	# families	% Households	% Households	% Households	% Households	% Households
Chi Kha Leu	127	0	397	1	43%	56%	1%	13%	11%
Chrouy Svay	138	0	799	6	67%	33%	0%	4%	4%
Dang Peaeng	65	0	697	1	64%	36%	0%	3%	6%
Srae Ambel	0	194	0	1316	37%	58%	5%	48%	37%
District: Thma Bang	30	0	1137	13	63%	37%	0%	10%	7%
Ta Tey Leu	30	0	42	0	79%	21%	0%	12%	0%
Pralay	0	0	136	0	54%	46%	0%	5%	1%
Chumnoab	0	0	45	0	100%	0%	0%	2%	0%
Ruessei Chrum	0	0	153	3	59%	41%	0%	16%	14%
Chi Phat	0	0	691	10	60%	39%	0%	10%	9%
Thmor Donpove	0	0	70	0	66%	34%	0%	13%	9%
District: Kampong Seila	824	0	855	147	40%	58%	2%	12%	19%
Chamkar Luong	118	0	164	28	56%	42%	2%	16%	13%
Kampong Seila	489	0	348	37	25%	72%	4%	13%	13%
Ou Bak Roteh	174	0	155	63	65%	34%	1%	9%	28%
Stueng Chhay	43	0	188	19	29%	70%	0%	7%	31%
MUNICIPALITY: Sihanoukville	6451	4032	3480	9501	23%	69%	7%	28%	38%
District: Mittakpheap	182	4032	0	7711	8%	79%	13%	45%	65%
Sangkat Muoy	0	238	0	836	12%	85%	2%	23%	49%
Sangkat Pir	0	814	0	1981	1%	78%	21%	74%	89%
Sangkat Bei	0	1387	0	2153	5%	73%	22%	46%	74%
Sangkat Buon	0	1593	0	2584	7%	84%	9%	49%	63%
Kaoh Rung	182	0	0	157	58%	42%	0%	0%	19%
District: Prey Nob	5893	0	3097	1257	37%	60%	3%	12%	14%
Andoung Thma	443	0	30	63	23%	72%	5%	12%	12%
Boeng Ta Prum	583	0	0	41	45%	52%	3%	9%	10%
Bet Trang	457	0	0	22	49%	51%	0%	12%	11%
Cheung Kou	339	0	645	248	46%	51%	2%	13%	12%
Ou Chrov	108	0	238	74	45%	52%	3%	11%	18%
Ou Oknha Heng	630	0	190	74	33%	66%	1%	8%	19%
Prey Nob	407	0	235	96	29%	69%	2%	11%	14%
Ream	589	0	124	161	30%	68%	2%	15%	26%
Sameakki	232	0	0	8	66%	33%	1%	6%	8%
Samrong	295	0	430	87	42%	53%	5%	16%	12%
Tuek L'ak	545	0	0	18	43%	53%	5%	9%	7%
Tuek Thla	320	0	235	15	43%	55%	2%	15%	14%
Tuol Toetueng	38	0	606	26	35%	61%	4%	6%	9%
Veal Renh	907	0	364	324	13%	79%	8%	17%	16%
District: Stueng Hav	376	0	383	533	25%	75%	1%	27%	34%
Kampenh	67	0	101	80	13%	86%	1%	42%	40%
Ou Treh	87	0	282	71	48%	51%	1%	31%	30%
Tumnob Rolok	222	0	0	382	16%	84%	0%	22%	36%
MUNICIPALITY: Kep	1727	0	3808	331	50%	36%	14%	17%	5%
District: Damnak Chang'aur	785	0	2912	73	54%	31%	15%	16%	4%
Angkaol	158	0	1024	5	50%	38%	12%	17%	2%
Ou Krasar	294	0	792	22	32%	34%	34%	12%	6%
Pong Tuek	333	0	1096	46	73%	23%	3%	18%	5%
District: Kaeb	942	0	896	258	42%	47%	11%	20%	6%
Kaeb	248	0	426	65	32%	57%	12%	28%	8%
Prey Thum	694	0	470	193	48%	40%	11%	15%	4%

Source: Commune Database 2003